
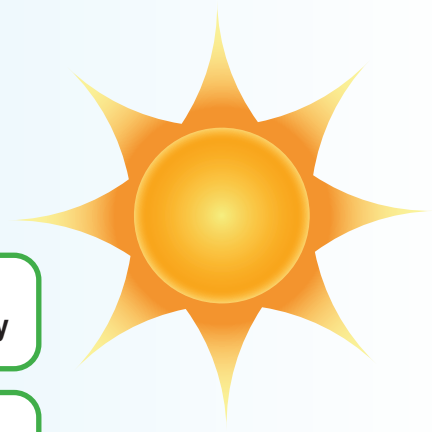
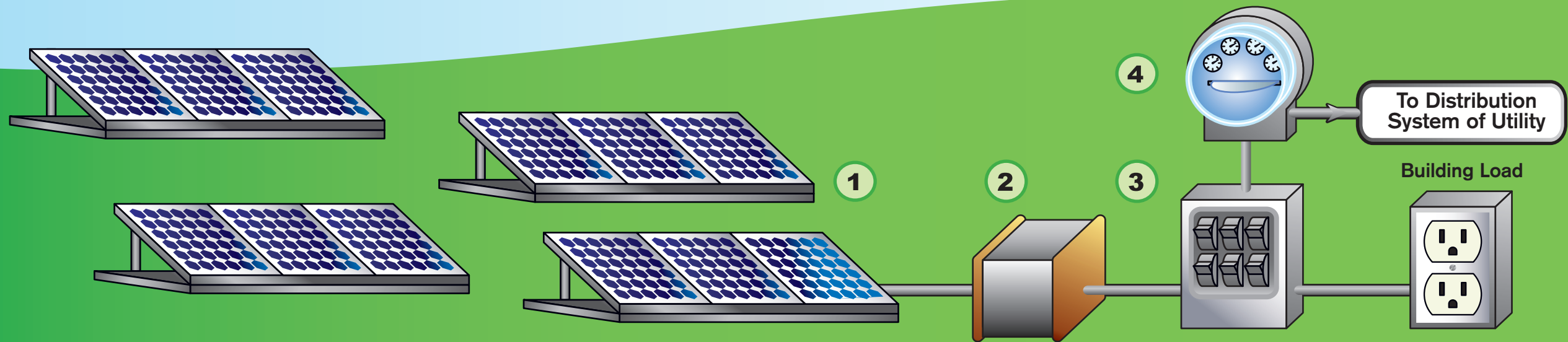


Kanapaha Middle School and GRUgreenSM Energy

GRUgreen Energy is energy generated from renewable, environmentally friendly sources like the sun, wind and biomass from landfill gas. It will help protect the environment for you, your children and generations yet to come. This solar project is part of that commitment. For more information, visit www.gru.com. 




- 1 Photovoltaic array converts solar energy to direct current electricity
- 2 Inverter converts direct current to alternating current
- 3 Breaker box provides an interconnection point to the consumer or grid
- 4 Meter measures the energy from the solar array and the building load

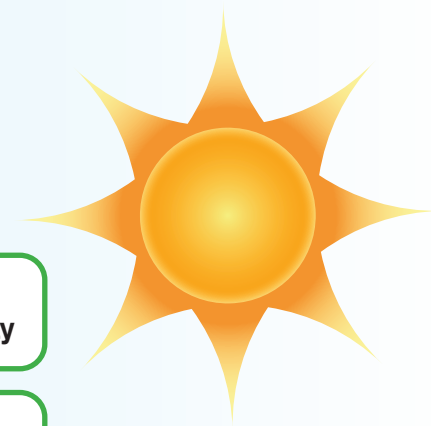


System installed by
Energy Conservation Services
of North Florida, Inc.

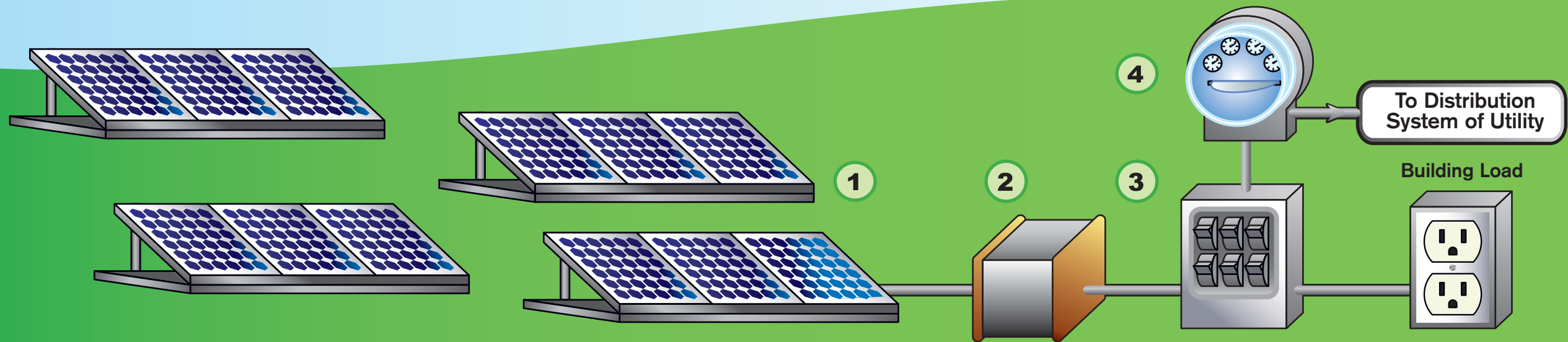
Special thanks to: City of Gainesville, GRU solar contributors, School Board of Alachua County and The Florida Solar Energy Center

Westwood Middle School and GRUgreenSM Energy

GRUgreen Energy is energy generated from renewable, environmentally friendly sources like the sun, wind and biomass from landfill gas. It will help protect the environment for you, your children and generations yet to come. This solar project is part of that commitment. For more information, visit www.gru.com. 



- 1 Photovoltaic array converts solar energy to direct current electricity
- 2 Inverter converts direct current to alternating current
- 3 Breaker box provides an interconnection point to the consumer or grid
- 4 Meter measures the energy from the solar array and the building load



System installed by
Energy Conservation Services
of North Florida, Inc.

Special thanks to: City of Gainesville, GRU solar contributors, School Board of Alachua County and The Florida Solar Energy Center