

**Wednesday, July 9, 2025, 5:30 p.m.**

**GRU Administration Building**

**301 SE 4th Avenue**

**Gainesville, FL 32601**

Directors

Chair Eric Lawson

Vice-Chair David Haslam

Director Jack Jacobs

Director Robert Skinner

If you have a disability and need accommodation in order to participate in this meeting, please call (352) 334-5051 at least two business days in advance. TTY (Text Telephone Telecommunication Device) users please call 711 (Florida Relay Service). For Speech to Speech (STS) relay, please call 1-877-955-5334. For STS Spanish relay, please call 1-877-955-8773. For STS French Creole relay, please call 1-877-955-8707.

**A. CALL TO ORDER**

Agenda Statement: The Gainesville Regional Utilities Authority encourages civil public speech. The Gainesville Regional Utilities Authority expects each person entering this chamber to treat others with respect and courtesy. Speakers are expected to focus on agenda items under discussion. Signs, props, posters, food, and drinks should be left outside the auditorium.

**B. ROLL CALL**

**C. INVOCATION**

**D. PLEDGE OF ALLEGIANCE**

**E. ADOPTION OF THE AGENDA**

**F. APPROVAL OF MINUTES**

Approval of the Minutes from the June 11, 2025 GRUA Meeting (B)

**G. CHAIR COMMENTS**

**H. GENERAL PUBLIC COMMENT**

(for items not on the agenda, not to exceed 30 minutes total)

**I. DIRECTOR COMMENTS**

**J. CONSENT AGENDA**

**1. State of the Utility, Monthly Update May 2025 (B)**

**Department:** Gainesville Regional Utilities/Office of the Chief Operating Officer

**Description:** GRU will be providing a monthly update to Authority members to ensure they are aware of the important projects and relevant utility measurements and benchmarks. This report provides information from May 2025.

**Fiscal Note:** None

**Recommendation:** The GRU Authority hear a monthly update from the utility's operational areas.

**K. CEO COMMENTS**

**L. ATTORNEY COMMENTS**

**M. BUSINESS DISCUSSION ITEMS**

**1. GRU Review (B)**

**Department:** Gainesville Regional Utilities/Office of the Chief Executive Officer

**Description:** The GRU Review has been added to the agenda as a recurring item in order to update the Board on the significant and most meaningful events since the last board meeting. The GRU Review isn't meant to replace all the granularity of the State of the Utility (which is included under the consent agenda), it is intended to supplement it and can evolve over time depending on the requirements set forth by the Board.

**Fiscal Note:** None

**Recommendation:** No action required by the Board other than to listen and ask questions about the presentation.

**N. RESOLUTIONS (Roll Call Required)**

**O. DIRECTOR COMMENTS**

**P. ADJOURNMENT**



**Gainesville Regional Utilities Authority**

**MINUTES**

**June 11, 2025, 5:30 p.m.  
GRU Administration Building  
301 SE 4th Avenue  
Gainesville, FL 32601**

Members Present: Craig Carter, Vice-Chair Haslam, Jack  
Jacobs, Chair Lawson, Robert Skinner

---

**A. CALL TO ORDER**

**B. ROLL CALL**

**C. INVOCATION**

Lead by Director Carter

**D. PLEDGE OF ALLEGIANCE**

**E. ADOPTION OF THE AGENDA**

**Moved by** Robert Skinner

**Seconded by** Vice-Chair Haslam

Public Comment: Jim Konish

Approved

**F. APPROVAL OF MINUTES**

**Moved by** Robert Skinner

**Seconded by** Jack Jacobs

Approved

**G. CHAIR COMMENTS**

Chair Lawson opted to hold his comments until the end of the meeting.

**H. GENERAL PUBLIC COMMENT**

**Public Comment:** Jim Konish, Janice Garry, Chuck Ross, Donald Shepherd

**I. DIRECTOR COMMENTS**

Director Jacobs spoke to public comment.

Vice Chair Haslam spoke to the public comment.

Director Skinner spoke to public comment and supported the comments made by fellow directors.

**J. CONSENT AGENDA**

**K. CEO COMMENTS**

CEO, Ed Bielarski gave updates to recent internal meetings, projects and SLAs (Service Level Agreements) with the City.

Introduced Utilities Attorney, Derek Perry.

**L. ATTORNEY COMMENTS**

Scott Walker spoke to the Director comments in support. Thanked Director Carter for his numerous years of service to the City of Gainesville. Commended GRUA Board for their decision to hire Derek Perry.

Kiersten Ballou gave updates as to the current legal appeal.

Utilities Attorney, Derek Perry addressed the Board and the public

## **M. BUSINESS DISCUSSION ITEMS**

### **1. Resource Management Agreement between The Energy Authority (TEA) and GRU (B)**

Director Skinner asked for clarification as to what this RMA would encompass for GRU. CEO Bielarski responded.

Director Jacobs addressed comments made during public comment, stating that GRU operates in accordance with specific standards and regulations as set by the State of Florida.

**Recommendation:** The GRU Authority approve the executed RMA along with Task Order 1.

**Moved by** Jack Jacobs

**Seconded by** Vice-Chair Haslam

CEO Bielarski gave a presentation regarding TEA relationship past and future.

**Public Comment:** Jim Konish, Chuck Ross, Donald Shepherd

Approved as Recommended

### **2. Discussion surrounding misinformation about GRU and GRUA (B)**

CEO Bielarski referred back to the Board comments from earlier during Director Comments.

**Recommendation:** The GRU Authority to hear the presentation, discuss and offer any suggestions.

Director Skinner thanked CEO for presentation.

Vice Chair Haslem supported the presentation, stating the public needs to be aware of the facts.

Director Jacobs spoke to comments made at City Commission meeting, recently. Expressed his concerns.

Heard

**3. Authorize the Utilities Attorney to file a lawsuit on behalf of the Authority challenging City of Gainesville Ordinance No. 2025-416 in the Eighth Judicial Circuit Court.**

Utilities Attorney Perry gave overview of what the lawsuit would encompass.

**Recommendation:** The GRU Authority to authorize the Utilities Attorney to file a lawsuit on behalf of the Authority challenging the City of Gainesville's Ordinance No. 2025-416 in the Eighth Judicial Circuit Court.

**Moved by** Jack Jacobs

**Seconded by** Robert Skinner

Lawsuit filing fee for service would be \$450. GRU would entertain any direction the Authority would like to offer.

**PUBLIC COMMENT:** Jim Konish, Chuck Ross, Donald Shepherd

Vice Chair Haslam questioned the amount of costs GRU would incur with this new lawsuit and recommended pulling from GFT, as well.

Approved as Recommended

**4. State of the Utility, Monthly Update April 2025 (B)**

COO Tom Brown reviewed the State of the Utility report with the GRUA.

Chair Lawson inquired about the timeline for the availability of the customer portal software, which will allow customers to access information related to the new AMI meters.

COO Brown and CEO Bielarski gave updates to the software.

COO Brown pointed out some highlights and accolades to GRU's credit.

Energy Delivery Officer, Chad Parker, presented a video showcasing the delivery of a new transformer, which will be replacing an outdated unit at McMichen Substation.

**Recommendation:** The GRU Authority hears a monthly update from the utility's operational areas.

Heard

**N. RESOLUTIONS (Roll Call Required)**

**O. DIRECTOR COMMENTS**

Director Jacobs gave warm farewell and appreciation to Director Carter.

Vice Chair Haslem also spoke to Director Carter in appreciation.

Director Skinner gave his appreciation to Director Carter.

Chair Lawson - Presented Director Carter with a plaque in appreciation of his service to the GRUA Board, as well as spoke to his appreciation of Director Carter's service.

Director Carter, offered his farewells and spoke to his tenure during the time as a Director and former Chair of the GRUA Board.

**P. ADJOURNMENT**

Adjourned 7:32PM

---

Kunti Nesbitt, GRUA Staff Liaison

Tracie OSteen, GRUA Staff Liaison



## Gainesville Regional Utilities Authority Agenda Item Report

---

**File Number:** 2025-546

**Agenda Date:** July 9, 2025

**Department:** Gainesville Regional Utilities

**Title:** State of the Utility, Monthly Update May 2025 (B)

**Department:** Gainesville Regional Utilities/Office of the Chief Operating Officer

**Description:** GRU will be providing a monthly update to Authority members to ensure they are aware of the important projects and relevant utility measurements and benchmarks. This report provides information from May 2025.

**Fiscal Note:** None

**Recommendation:** The GRU Authority hear a monthly update from the utility's operational areas.

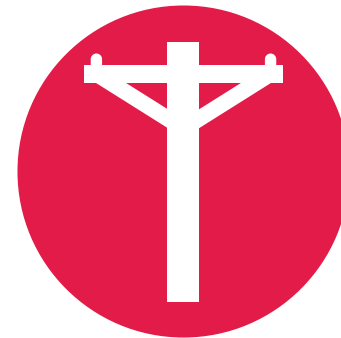


**FY25**  
**May**  
**State of the Utility**



# State of the Utility

**FY25**  
**May**



# Energy Supply

## Major Figures & Achievements

Recordable  
Injuries  
**1**

Regulatory  
Compliance  
Issues  
**0**

### YTD

Recordable  
Injuries  
**1**

Regulatory  
Compliance  
Issues  
**1**

## Regulatory Compliance (NERC)

### Environmental Compliance

We currently have one outstanding environmental compliance issue: Following a recent outage at the Kelly Combined Cycle Plant (JCC1), CO emissions exceeded permitted levels during CT4 tuning. In response, we coordinated a Short Duration Outage (SDO) beginning after peak load on Friday, June 20, with work scheduled through Wednesday, June 25. GE tuning personnel are onsite for advanced tuning of CT4 on June 26. Our Environmental Permitting and Compliance Director is in direct communication with FDEP and will promptly provide post-SDO tuning results.

In parallel, beginning May 30, CT4 began intermittently shifting from the standard “pre-mix” operating condition to a less stable “lean/lean” mode. This instability affected System Control’s ability to maintain AGC mode. A temporary derate to 61 MW on June 2 stabilized operations, but by June 9, CT4 could no longer return to pre-mix mode. Since our permit does not support extended lean/lean operation, CT4 was taken offline once adequate purchased power was secured. Troubleshooting and inspections under the SDO are ongoing. We still plan to restart CT4 on June 24 to complete tuning.

### Electric Reliability Compliance

- No outstanding electric compliance issues at this time.
- The NERC audit conducted by SERC was formally out-briefed on June 5. We are preparing our formal response, due within 30 days of that briefing.

# Energy Supply

## **Deerhaven (DH)**

### **Deerhaven Unit 1 (DH1)**

- We are evaluating outage scope needs for 2026, based on a Lifetime Assessment study from 2021. The assessment will help identify potential work needed to safely extend operation beyond the current retirement date of December 2027.

### **Deerhaven Combustion Turbines**

- All three units are online and fully available. No issues reported.

## **Deerhaven Renewable (DHR)**

- We are evaluating the feasibility of adding a Run Transformer and Run Breaker scheme to DHR, similar to our other steam units. This upgrade is intended to address current reliability issues caused by voltage swings that affect auxiliary equipment, resulting in unit trips. DH1, DH2, and JCC1 already isolate auxiliary systems via Run Transformers, preventing such trips.

## **Kelly Generating Station (JRK)**

- Online throughout May; currently offline as of June 9.
- Out is a planned, short-duration outage as detailed previously in Regulatory Compliance.

## **South Energy Center (SEC)**

- **Wartsila Engine** – Online.
- **Solar Engine** – On standby and fully available. The plant's steam chiller turbine has been repaired by Alternative Repair and Machining (ARM) in Jacksonville. The rotor has been reassembled and recommissioning is underway, with return to service expected during the week of June 16, 2025.

## **Other Items**

### **Insurance & Recovery**

- GRU has submitted an insurance claim for the repair of the DHR turbine rotor, which failed prematurely in October 2024 after only 11 years in service. Our insurance adjuster retained a third-party engineering firm to assess the claim. While the carrier initially denied the claim—citing a lack of a triggering “event”—we are challenging this basis and requesting policy documentation that specifically supports their position.

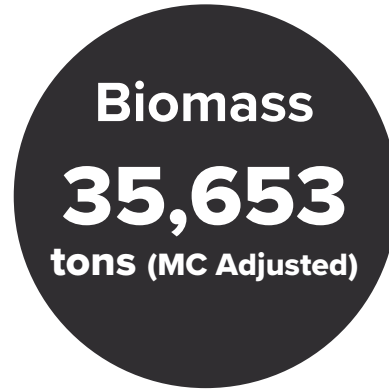
# Energy Supply

## Fuels Management

### Inventory



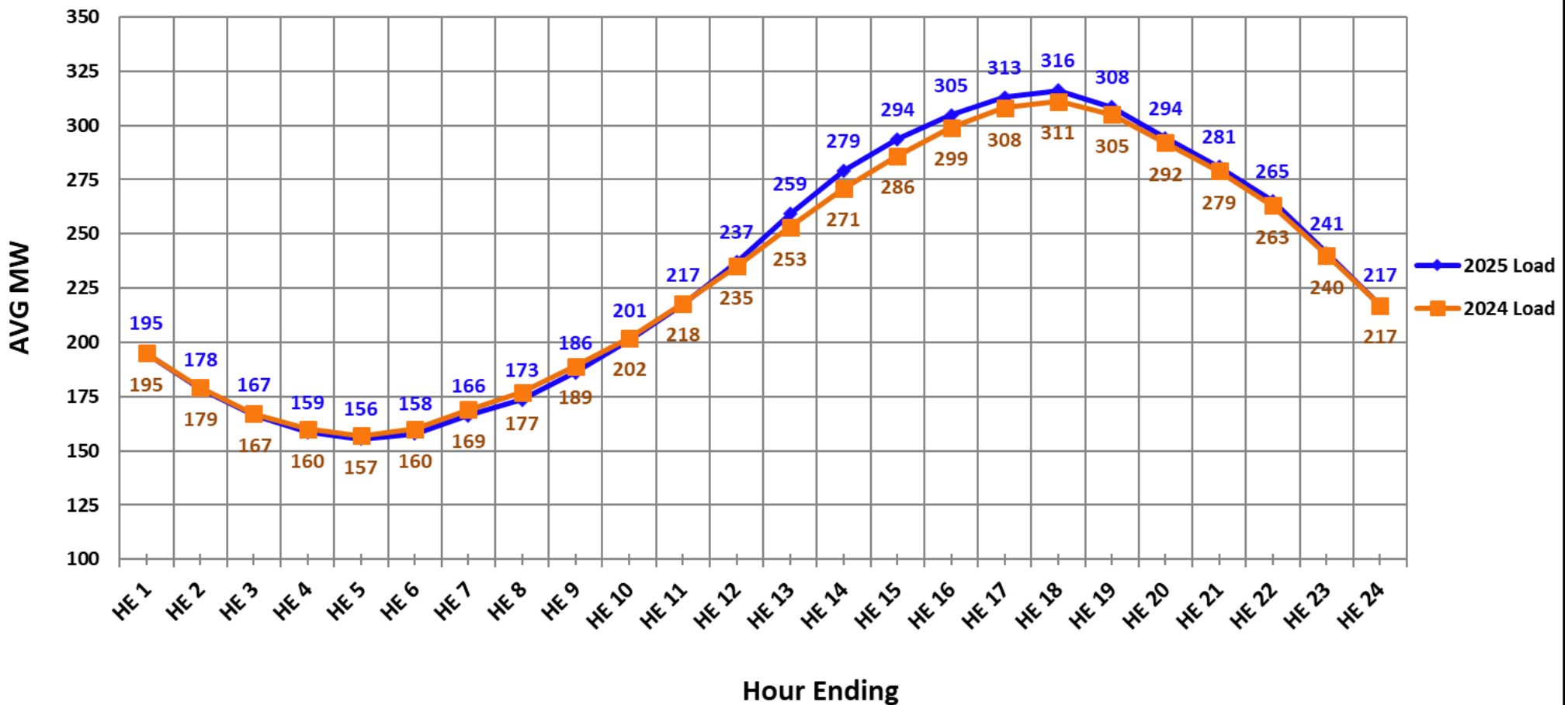
42 days at full load;  
85 days at half load.



12.1 days at full load;  
24.2 days at half load;  
22.1 days at most recent  
burn rate.

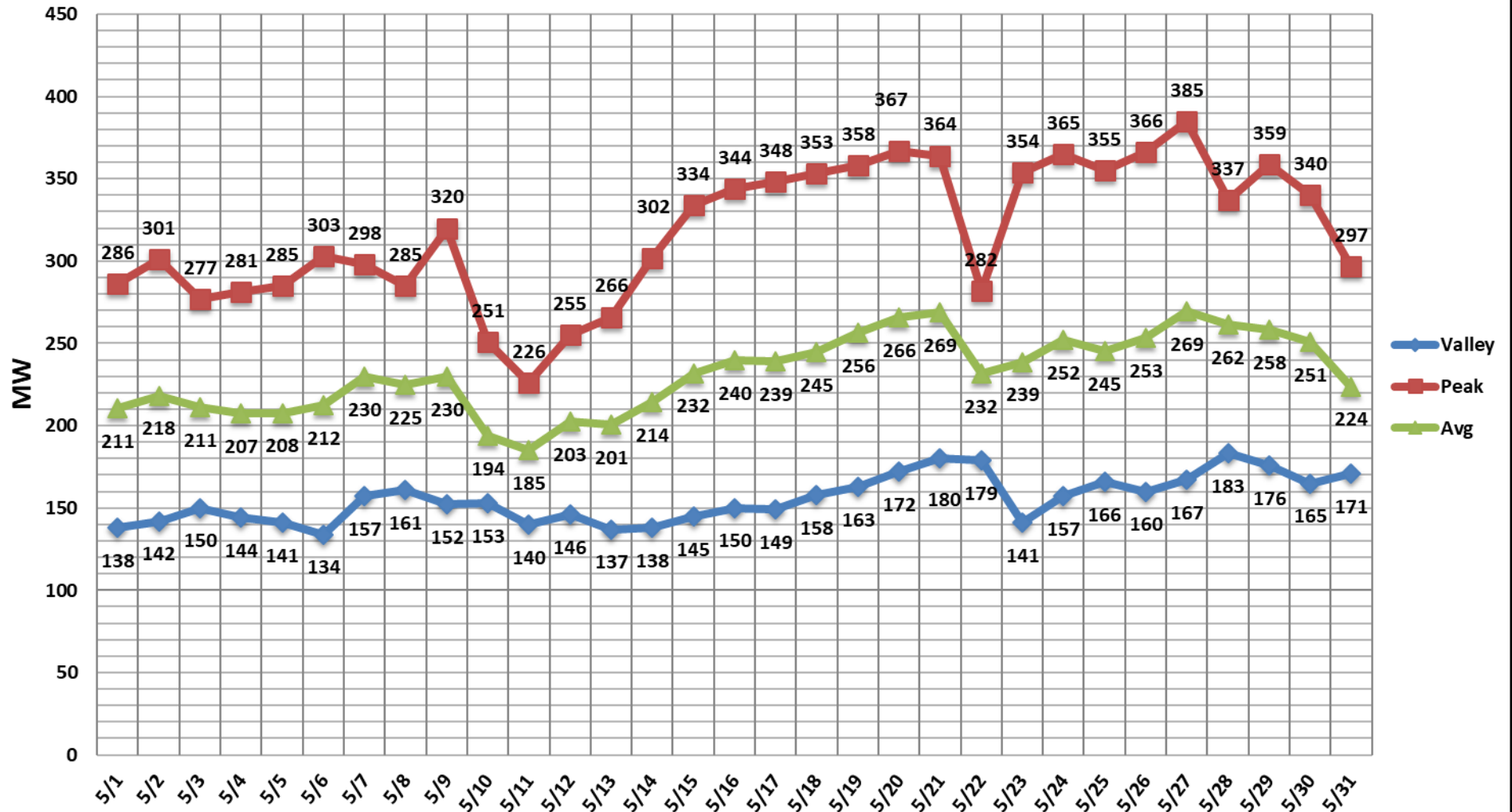
# Energy Supply

May 2025 vs May 2024  
Average Hourly Loads



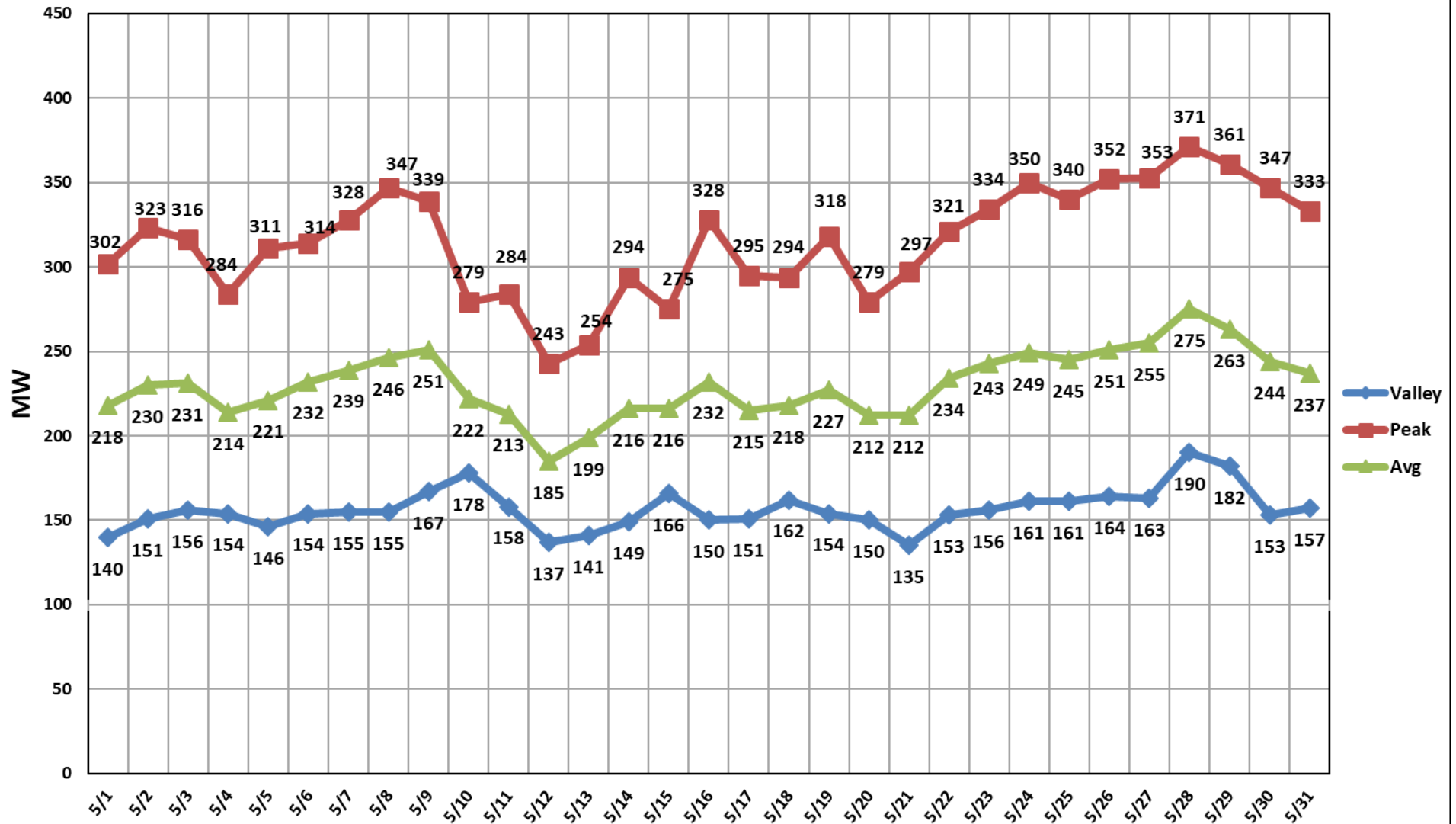
# Energy Supply

**May 2025**  
**Peak, Valley, and Average Loads**



# Energy Supply

**May 2024**  
**Peak, Valley, and Average Loads**





# Energy Supply

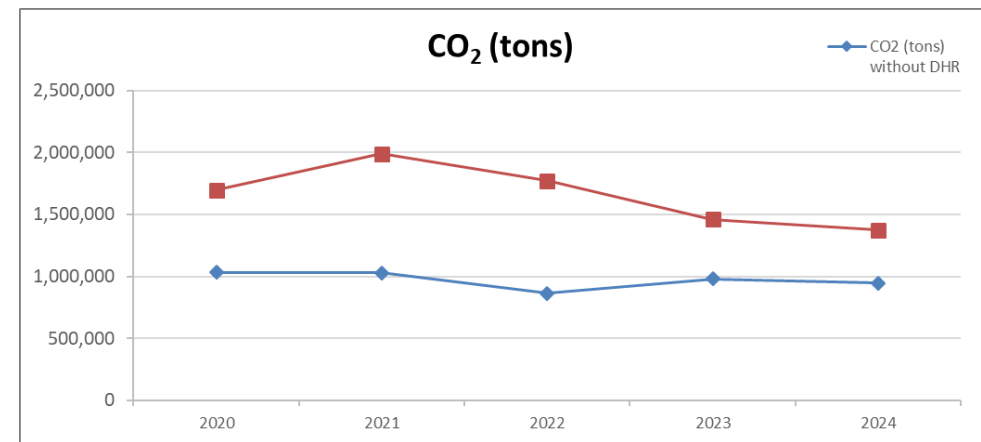
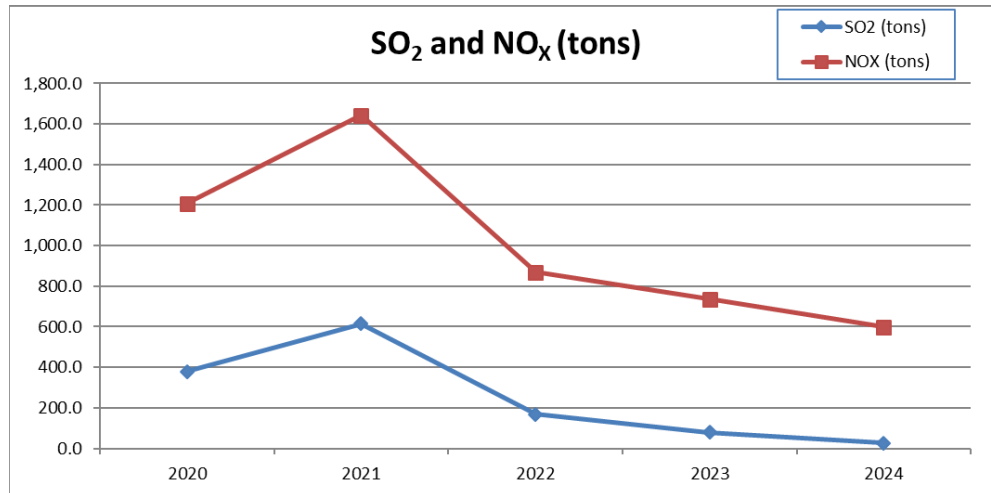
## Emissions Data

### Yearly Emissions

	SO <sub>2</sub> (tons)	NO <sub>x</sub> (tons)	Mercury (lbs)*	PM (tons)*	CO <sub>2</sub> (tons) without DHR	CO <sub>2</sub> (tons) with DHR
2020	379.3	1,208.3	3.1	56.5	1,033,389.5	1,697,218.5
2021	614.7	1,643.0	3.7	63.7	1,027,918.9	1,991,487.9
2022	167.4	867.8	2.1	11.2	861,824.7	1,771,204.7
2023	80.2	737.1	0.6	12.2	980,726.2	1,458,824.3
2024	26.5	598.4	0.8	5.3	946,129.6	1,373,862.0
2025 (thru May)**	130.2	283.4	0.5	2.5	366,909.4	626,857.0

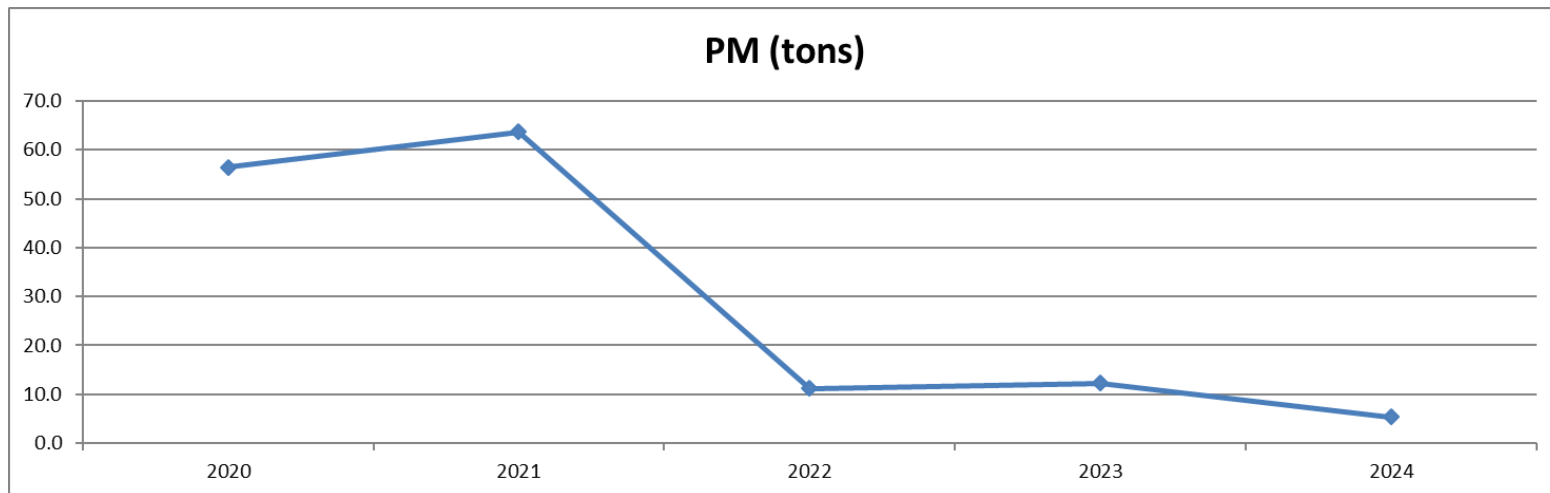
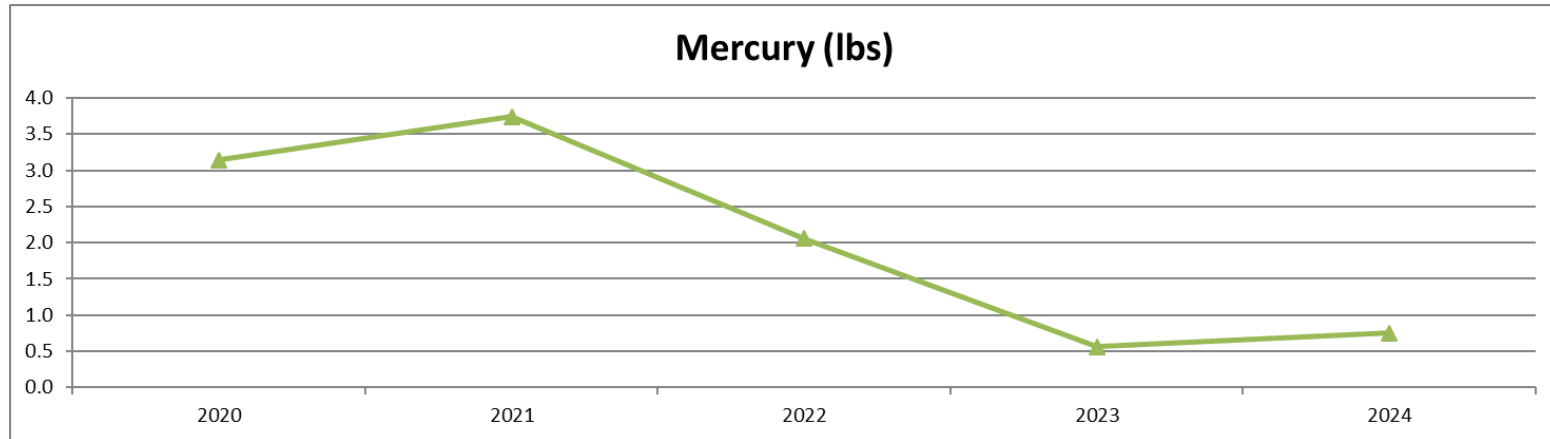
\*Mercury and Particulate values are for Unit 2 only.

\*\*Values Subject to Change - Final Values Dependent on Fuel Analyses



# Energy Supply

Yearly Emissions



# Energy Supply

## Emissions Data

[illegible]

# Energy Supply

## Emissions & Compliance Data

Environmental				
		May		Calendar Year to Date (May)
Notices of Violation		0		0
Emissions				
DH1, DH2, DHCT3, JRKCC1				
	CO <sub>2</sub> (tons)	74,102.5		366,909.4
	NO <sub>x</sub> (tons)	38.3		209.9
	SO <sub>2</sub> (tons)	0.4		125.3
DH Unit 2 (only)				
	PM <sub>FILT</sub> (tons)	0.2		2.5
	Hg (lbs)	0.0		0.5
DHR				
	CO <sub>2</sub> (tons)	62,497.0		259,947.6
	NO <sub>x</sub> (tons)	18.0		73.5
	SO <sub>2</sub> (tons)	1.2		4.9

# Energy Supply

## Availability & Capacity

	Month	FY25 YTD	FY24 YTD	Month	FY25 YTD	FY24 YTD
DH-2	32.88%	91.59%	74.32%	11.99%	29.44%	29.13%
DH-1	99.65%	99.95%	90.96%	37.83%	19.57%	20.76%
Kelly CC	98.75%	87.09%	88.78%	96.81%	84.47%	81.90%
DH CT-1	100.00%	100.00%	95.09%	0.01%	0.01%	0.06%
DH CT-2	100.00%	99.89%	94.75%	0.00%	0.01%	0.02%
DH CT-3	100.00%	95.17%	99.09%	2.53%	0.37%	0.29%
DHR	100.00%	49.05%	84.30%	53.42%	28.08%	33.83%

## Fuel Consumed

	Month	YTD	Budget YTD	Delta Budget
Coal (Tons)	-	5,708	-	5,708
Gas (MCF)	1,216,506	10,271,712	10,192,001	79,711
Fuel Oil (Gal)	-	491,892	-	491,892
Biomass (Tons)	55,943	226,199	61,716	164,482

# Energy Supply

## Performance Parameters

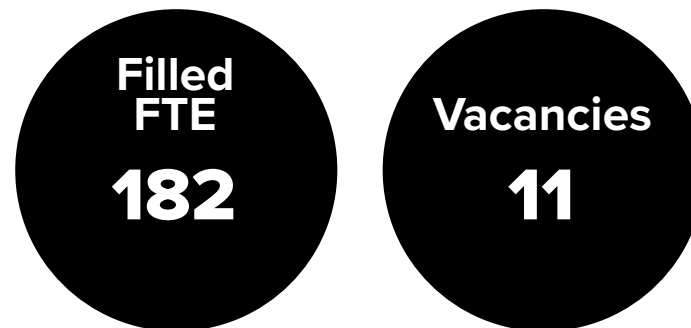
25-Feb	Month	YTD	Budget YTD	Delta Budget
DH-2	18,272	219,581	265,751	-46,170
DH-1	20,213	47,780	10,436	37,344
Kelly CC1	78,483	295,549	311,514	-15,965
CTs	1,446	1,753	39	1,714
Grid	13,072	-14,778	59,656	-74,434
DHR	39,458	161,418	46,855	114,563

# Energy Supply

## Vacancies and Retirements

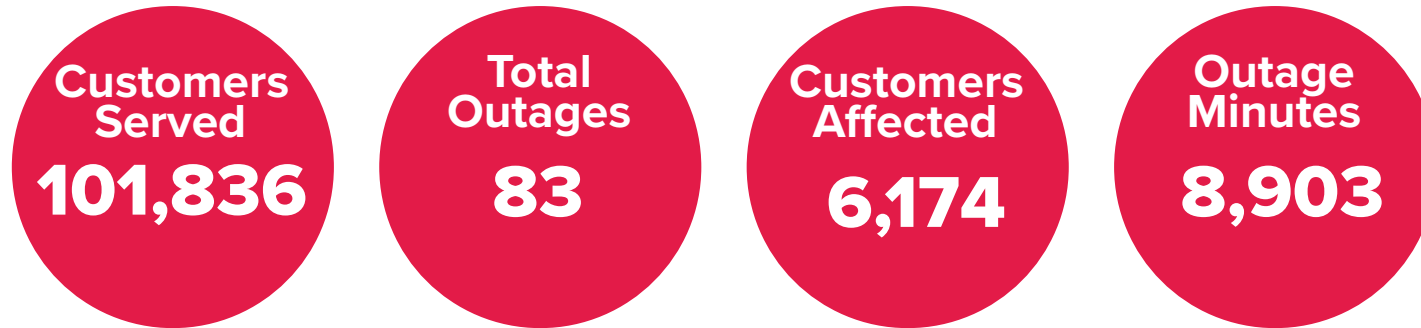
Status	Title	Filled?	Group	Vacant Date
Vacant	Engineer and Utility Designer IV	N	GRU Deerhaven Plant	12/01/23
Vacant	Energy Supply Maintenance Planner	N	GRU Deerhaven Plant	03/01/25
Vacant	Power Plant ICE Technician	N	GRU Deerhaven Plant	07/08/24
Vacant	Power Plant Mechanic Journeyman	N	GRU Deerhaven Plant	04/03/23
Vacant	Power Plant Mechanic Journeyman	N	GRU Deerhaven Plant	07/27/23
Vacant	Power Plant MMG ICE Supervisor	N	GRU Deerhaven Plant	05/22/23
Vacant	Production Technician	N	GRU Kelly Plant	02/03/25
Vacant	Power Plant Journeyman Operator	N	GRU Deerhaven Plant	03/04/25
Vacant	Production Leader	Y	Deerhaven Renewables	02/18/25
Vacant	Power Plant Heavy Equipment Operator	N	GRU Deerhaven Plant	04/23/25
Vacant	Energy Supply Maintenance Planner	N	GRU Deerhaven Plant	03/01/25
Vacant	Maintenance Leader	Y	GRU Deerhaven Plant	03/06/25
Vacant	Power Plant ICE Technician	N	GRU Deerhaven Plant	03/07/25

## Personnel



# Energy Delivery

## Reliability Statistics



### Outage Causes

Cause	Overhead	Underground	Both
Undetermined	8	1	0
Weather	2	0	0
Vegetation	20	0	0
Animals	18	2	0
Foreign Interference	0	0	0
Human Cause	1	3	0
Equipment Failure	21	5	2
Other	0	0	0
<b>Total</b>	<b>70</b>	<b>11</b>	<b>2</b>



# Energy Delivery

## Electric System Consumption

	2025		2024	
	CONSUMPTION (kWh)	CUSTOMERS	CONSTUMPION (kWh)	CUSTOMERS
Feed-in-Tariff - Residential	206	86	772	93
Feed-in-Tariff - General Service	2,160	140	157	147
Electric - GS - Demand - Regular	45,789,746	1,108	43,954,038	1,098
Electric - General Service Demand PV	1,353,890	30	1,261,694	29
Electric - GS - Kanapaha w Curtail Cr	1,084,800	1	1,075,200	1
Electric - GS - Demand - Large Power	8,430,520	10	7,606,200	7
Electric - GS - Murphree Curtail Credit	1,560,000	1	1,452,000	1
Electric - GS - Large Demand PV	3,986,400	2	3,609,600	2
Electric - GS - Non Demand	15,407,775	10,143	14,202,806	10,139
Electric - General Service PV	142,251	92	84,390	84
Electric - Lighting - Rental *	805,021	1,798	825,577	7,040
Electric - Lighting - Street - City *	360,337	14	396,525	15
Electric - Lighting - Street - Country *	127,121	1	127,313	1
Electric - Lighting - Traffic	144	1	144	1
Electric - Residential - Non TOU	67,097,196	91,365	61,301,294	91,434
Electric - Residential PV	437,137	1,546	301,210	1,402
<b>Total Retail Electric</b>	<b>146,584,292</b>	<b>104,525</b>	<b>136,198,606</b>	<b>104,438</b>

\* Number of customers is excluded from total customer count.

# Energy Delivery

## Gas System Consumption

	2025		2024	
	CONSUMPTION (THM)	CUSTOMERS	CONSUMPTION (THM)	CUSTOMERS
Gas - GS - Regular Service (Firm)	822,057	1,262	736,694	1,304
Gas - GS - Regular Service (Small)	30,893	495	28,454	448
Gas - GS - Interruptible - Regular Serv	43,841	1	39,311	1
Gas - GS - Interruptible - Large Volume	490,372	9	401,084	7
Gas - Residential - Regular Service	701,910	35,695	561,562	35,575
<b>Total Retail Gas</b>	<b>2,089,073</b>	<b>37,462</b>	<b>1,767,105</b>	<b>37,335</b>

## Major Projects

### Electric Engineering / T&D Construction

- North Florida Regional Medical Center at Archer – Waiting on customer to pull secondary wires before energizing transformers.
- Oaks Preserve Phase 2 – Electrical installation in progress for residential subdivision.
- Butler Plaza Center Cup – Design completed; construction started.
- Archer Place Apartments – Ongoing OH to UG conversion; permanent power pending road/building completion.
- Evergreen Apartments at Oaks Mall – Design completed; waiting on developer to begin electrical installation.
- Hawthorne Heights – Final design details in progress in ProjectDox.
- Natura – Design completed; released for construction.
- Hammock Preserve – Construction in progress for mixed-use development.
- Airport Parking Garage – Construction in progress.
- Gilbane-Colligate Apartments – Construction in progress on NW 20th Ave.
- Tesla at Oaks Mall – Fast charging station construction completed.
- Main St WWW Plant – In design; UG power source planned; work order to close soon.
- 203-205 Feeders Reconductoring (GRIP) – Work order released; awaiting DOE approval.
- Bradford Transmission Line 15 (GRIP) – 100 ductile iron poles & equipment replaced; construction mostly complete.
- TACTICS 931 – 98% complete; hardening lines & tie point for reliability.
- TACTICS 209/287 – Hardening & replacing old poles/crossarms; work in progress.
- New Feeder #1038 – Preliminary work initiated.

# Energy Delivery

- **Santa Fe College 12kV Enhancement** – Survey complete; waiting for college to proceed.
- **County Criminal Court Complex Expansion** – New project.
- **Circuit 932 and 936** – Upgrades complete.

## Substation & Relay

- **Parker Autotransformers (GRIP)** – 90% design delivered; first transformer arrived May 5; second due October.
- **McMichen T-42 Transformer (GRIP)** – In service as of May 29.
- **Line 16 Upgrade** – Scope set; PRs/POs generated; construction starts October.
- **Line 8 Upgrade (GRIP)** – Scope set; includes major breaker/switch/relay work; start spring 2026.
- **Fort Clarke T-81 & T-82 Relay Upgrade** – Design/engineering started; summer FY25 install.
- **Sugarfoot Feeder Replacements** – Six breakers replaced; four more scheduled for FY25 summer.
- **Millhopper T-53 & T-54 (GRIP)** – Design started; transformers ordered; delivery in 2026.
- **Kelly T-31 & T-32 (GRIP)** – Transformers ordered; T-31 spring 2027, T-32 fall 2027 delivery.

## Gas Engineering

- **Bridlewood** – 6” main extension under construction. Reroute design completed and permitted.
- **Parker Rd Backfeed** – Construction underway under current permit. Continuing design toward Lugano Subdivision.
- **Convergence Research Park Phase 3** – Design completed and under construction. Joint trenching with electric.
- **UF Backfeeds** – Pricing provided to UF for additional backfeeds to enhance system reliability.
- **UF Cogen Test** – Testing complete. Project being closed out.
- **Flint Rock Phase 2** – Design completed and construction underway. Joint trenching with electric contractor.

## Gas T&D

- **Museum Rd Pit Relocation** – UF approved Center Dr relocation; documents submitted to State.
- **Gainesville Housing Authority (2626 E Univ Ave)** – Replacing 3,520 ft. of bare steel pipe; may defer to next FY.
- **Bridlewood Subdivision** – 66% of external main & 85% of Phase 1 complete; redesign due to conflicts.
- **Archer Place Apts** – Construction complete; waiting on meter install/test.
- **Flint Rock Phases 2 & 3** – 99% complete; tie-ins scheduled week of June 9.
- **Convergence Research Park** – 66% complete; awaiting developer schedule.
- **Williston Rd Regulation Station** – Land rights coordination ongoing.
- **Williston Rd & SW 23rd St (System Protection)** – 200 ft. 4” main installation planned.
- **UF Broward Hall (System Growth)** – 450 ft. backfeed project awaiting landscape redesign.

# Energy Delivery

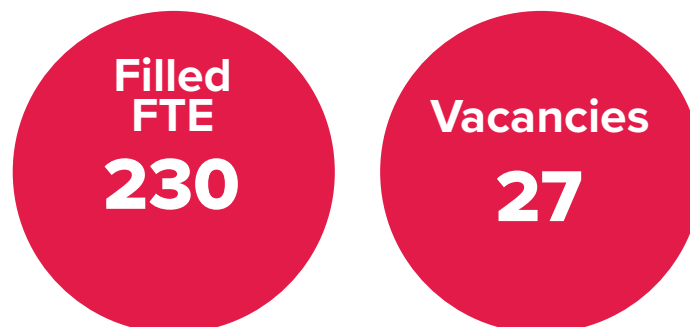
## Advanced Metering Infrastructure (AMI)

Category	Electric	Water	Natural Gas	Total
Remote Reading	103,639	64,258	32,516	200,413
AMI Devices	103,696	65,500	32,586	201,782
Non-AMI Devices	35	12,609	5,325	17,969
Total Devices	103,731	78,109	37,911	219,751
Saturation %	100.0%	83.9%	86.0%	91.8%

## Standard Industry Comparisons

Comparison	Actual	Goal	Description
SAIDI	2.33	4.5	System Average Interruption Duration Index
CAIDI	38.48	55	Customer Average Interruption Duration Index
SAIFI	0.06	0.08	System Average Interruption Frequency Index
ASAI	99.99%		Average Service Availability Index

## Personnel



# Energy Delivery

## Vacancies and Retirements

Status	Title	Filled?	Group	Vacant Date
Vacant	Electric Line Clearance Coordinator	N	T&D Vegetation Management	Nov. 2024
Vacant	Principal Engineer and Utility Designer	N	Electric Engineering	March 2024
Vacant	Energy Delivery Facilities Specialist II	N	Electric Engineering	March 2024
Vacant	Engineer & Utility Designer III	N	Electric Engineering	Jan. 2024
Vacant	Relay Technician	N	Relay Operations	March 2024
Vacant	Energy Delivery Facilities Specialist II	N	Electric Engineering	Feb. 2025
Vacant	Meter Reader	N	Electric Meter Measurement Operations	Feb. 2025
Vacant	Meter Reader	N	Electric Meter Measurement Operations	April 2025
Vacant	Electric Measurement Technician	N	Electric Meter Measurement Operations	Feb. 2025
Vacant	Electric Line Worker	N	T&D Construction	Feb. 2025
Vacant	Electric Line Worker	N	T&D Construction	Feb. 2025
Vacant	Line Worker Lead	N	T&D Construction	June 2024
Vacant	Technical Systems Analyst II	N	Systems Control/Technical Support	Feb. 2025
Vacant	Line Technician Lead	N	Gas T&D Construction	April 2025
Vacant	Field Service Technician	N	Gas T&D Administration	Feb. 2025
Vacant	Operational Technology Network Analyst Senior	N	Systems Control/Technical Support	April 2026
Vacant	Distribution System Operator II	N	Systems Control Operations	May 2025
Vacant	GIS and Operational Systems Technician	N	GIS Operations and Standards	May 2025
Vacant	Electric Line Worker	N	T&D Construction	June 2025
Vacant	Power Systems Application Engineer	N	Systems Control Operations	June 2025
Filled	Electric Line Worker	Y	T&D Construction	Sept. 2025

# Water/Wastewater

## Production

### Murphree Water Treatment Plant (Operations Normal)

		Month (mgd)	FY 25 YTD (mgd)	FY 24 (mgd)	Permitted Capacity (mgd)	FY 25 YTD % of Permitted Capacity
	Average Daily Flow	25.5	23.6	23.2	30	79%
	Max Daily Peak Flow	36.6	36.6	35.4	54	68%

### Main Street Water Reclamation Facility (Operations Normal, Reclaimed Water On)

		Month (mgd)	FY 25 YTD (mgd)	FY 24 (mgd)	Permitted Capacity (mgd)	FY 25 YTD % of Permitted Capacity
	Average Daily Flow	5.1	5.6	6.2	7.5	75%
	Max Daily Peak Flow	7.6	13.1	16.1	NA	NA

### Kanapaha Water Reclamation Facility (Operations Normal, Reclaimed Water On)

		Month (mgd)	FY 25 YTD (mgd)	FY 24 (mgd)	Permitted Capacity (mgd)	FY 25 YTD % of Permitted Capacity
	Average Daily Flow	9.9	10.6	11.1	14.9	71%
	Max Daily Peak Flow	16.4	19.1	24.7	NA	NA

# Water/Wastewater

Environmental Compliance					
Water Distribution System					
			Month	FY 25 YTD	FY 24
		Precautionary Boil Water Notices:	3	17	25
Wastewater Collection System					
			Month	FY 25 YTD	FY 24
		Sanitary Sewer Overflows (SSOs)	0	13	22
		<i>SSOs By Type:</i>			
		Residential Grease & Toiletries		3	8
		Infrastructure	0	8	4
		Third-Party Damage		2	3
		Wet Weather			0
		Named Storms			7

# Water/Wastewater

Maintenance						
Water Distribution System						
			Month	FY 25 YTD	FY 24	Monthly Goal
		Dispatched Water Work Orders	412	3,532	3,866	-
		Water Leaks	170	1,450	1,711	-
		Water Damages (by 3rd Parties)	28	285	N/A	-
		Other Water Work Orders	214	1,797	2,175	-
		AMI Large Meter Changeouts	23	535	1,057	-
		Number of Water Services Replaced	94	639	1,278	83
		Feet of Water Main Replaced	3,182	17,314	22,543	2,200
Wastewater Collection System						
			Month	FY 25 YTD	FY 24	Monthly Goal
		Dispatched Sewer Work Orders	56	561	776	-
		Sewer Stoppages	12	139	226	-
		Sewer Damages (by 3rd Parties)	4	37	N/A	-
		Other Sewer Work Orders	40	385	550	-
		SWAMP Program				
		Miles of Gravity Main Inspected	16.5	117	214	12.5
		Number of Manholes Inspected	420	3,158	5,121	200
Reclaimed Distribution System						
			Month	FY 25 YTD	FY 24	Monthly Goal
		Dispatched Reclaim Work Orders	13	88	86	-
		Reclaim Leaks	1	18	12	-
		Reclaim Water Damages (by 3rd Parties)	0	1	N/A	-
		Other Reclaim Work Orders	12	69	74	-



# Water/Wastewater

## Major Projects

### Water Distribution

- **Galvanized Water Main Replacements** – Multiple replacement locations.

### Wastewater Collection

- **SW 24th Ave. Force Main Improvements Project (Grant Funded)** – Construction in progress; completion expected July 2025.
- **NW 34th Street Force Main Replacement** – Infrastructure failure; construction by GRU crews, completion expected June 2025
- **Fort Clarke Blvd. Force Main** – Construction began March 2025; FDOT ROW work completed by July 2025; full completion expected December 2025.

### Main Street Water Reclamation Facility

- **Facility Update** – Received 5-year operational permit from Florida Department of Environmental Protection.

### Kanapaha Water Reclamation Facility

- **Facility Update** – Aerator replacement to begin June 2025; materials being delivered

### Lift Stations

- **Lift Station No. 1 Project** – Concrete formwork underway for new electrical building; equipment installation scheduled for fall.

### Murphree Water Treatment Plant

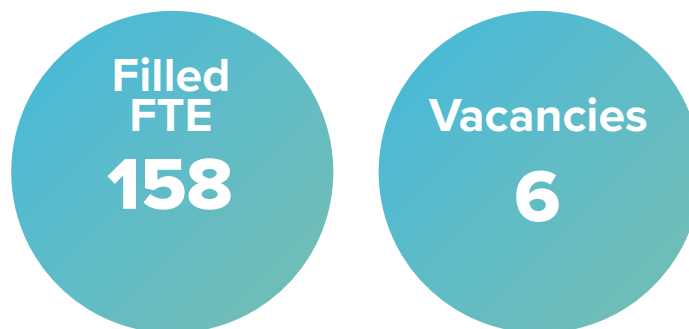
- **Well 12 Replacement** – Project completed.

# Water/Wastewater

## Vacancies and Retirements

Status	Title	Filled?	Group	Vacant Date
Posting Soon	Wastewater ICE Tech	N	Water Reclamations	Nov. 2024
Interviewing	New Development Engineer 1-4	N	W/WW Engineering	Dec. 2024
Starting July 14	Principal Engineer	N	W/WW Engineering	April 2025
Starting May 26	Crew Leader	N	Water Distribution	Jan. 2025
Starting June 23	Service Operator	N	Water Distribution	May 2025
Starting June 23	Service Operator	N	Wastewater Collection	April 2025
Starting July 21	Construction Operations Specialist	Y	W/WW Engineering	July 2025
Interviewing	Development Operations Specialist	Y	W/WW Engineering	Sept. 2025
Interviewing	Treatment Plant Supervisor	Y	Water Reclamations	Sept. 2025

## Personnel



# Safety & Training

## Safety Data Month Injury Statistics



Department	First Aid Given	Recordable Injuries	DART*
Administration	0	0	0
W/WW	0	0	0
Energy Supply	0	0	0
Energy Delivery & Gas	0	0	0
GRUCom	0	0	0
<b>Total</b>	<b>0</b>	<b>0</b>	<b>0</b>

\*DART: Days away, restricted or transferred.

## Fiscal YTD Injury Statistics



Department	First Aid Given	Recordable Injuries	DART
Administration	1	1	0
W/WW	0	1	0
Energy Supply	0	1	30
Energy Delivery & Gas	0	3	11
GRUCom	0	0	0
<b>Total</b>	<b>1</b>	<b>6</b>	<b>41</b>

# Safety & Training

## Month Vehicle Collisions & Miles Driven



Department	Miles Driven	Recordable Collisions	Preventable Collisions
Administration	11,428	0	0
W/WW	71,911	1	0
Energy Supply	4,225	0	0
Energy Delivery & Gas	102,008	0	0
GRUCom	6,191	0	0
<b>Total</b>	<b>195,763</b>	<b>1</b>	<b>0</b>

## Fiscal YTD Vehicle Collisions & Miles Driven



Department	Miles Driven	Recordable Collisions	Preventable Collisions
Administration	66,717	1	0
W/WW	565,650	6	0
Energy Supply	24,316	0	0
Energy Delivery & Gas	811,267	4	1
GRUCom	42,202	2	1
<b>Total</b>	<b>1,510,152</b>	<b>13</b>	<b>2</b>

# Safety & Training

## **Injury Details**

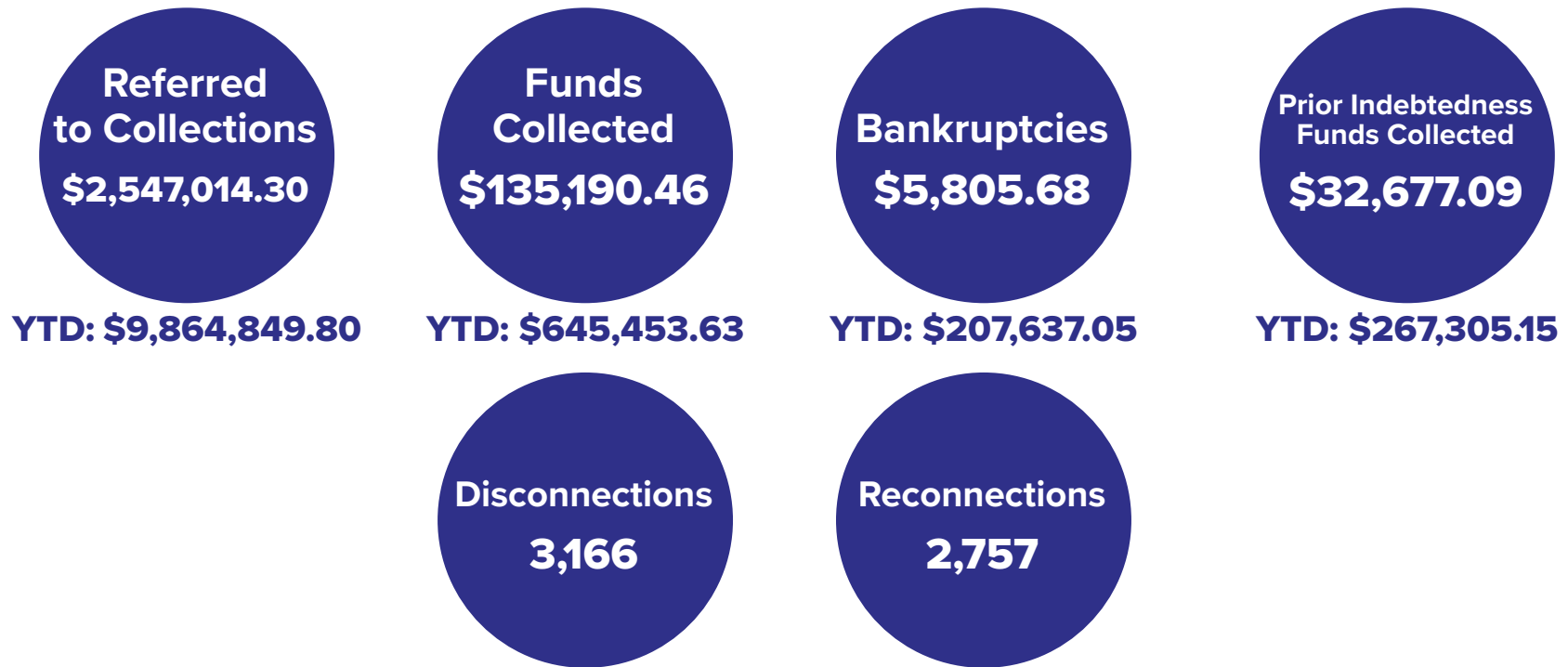
- None reported.

## **Collision Details**

- **May 1, 2025** – While stopped at red light, another vehicle rear-ended the back of U2163.

# Customer Operations

## Revenue Assurance



## Billing & Customer Solutions

- Invoicing rating: **99.95%**
- Meter rereads: **109**
- Locked reads: **8,839**
- Solar invoicing rating: **100%**
- Processed emails: **1,455/1,423 (102%)**

## Customer Experience

Transactional Survey

**4.2**



Lobby Survey

**4.9**



Relationship Survey

**3.3**



Page 38 of 49

# Customer Operations

## New Services

Active Projects	Amount
City	167
County	44

<b>Building Permit Reviews</b>	<b>82</b>
--------------------------------	-----------

New Installations	Amount
Electric	78
Water	70
Wastewater	61
Gas	2

Solar Reviews	Amount
Plan Reviews for March	4
PVs Completed on Time	4
PV Installations	6
Avg. Handle Time (Weeks)	5.71

# Customer Operations

## Customer Service

### Answer Speed

Call Type	Actual	YTD	Goal
Residential	9:02	8:27	5:00
Non-residential	3:31	2:09	3:00

### Handle Time

Call Type	Actual	YTD	Goal
Residential	9:02	8:05	6:00
Non-residential	8:30	8:45	6:00

Total  
Calls

**14,608**

## Other Statistics

Payments  
Returned

**450**

Lobby  
Visits

**3,435**

Project  
Share  
**\$3,440.31**

Social  
Service Vouchers

**249**

**\$164,666.35**

**\$235,408.89**



# Customer Operations

## Payment Type Details

Payment Type	Transactions	Transactions YTD	\$ Amount	\$ Amount YTD
Drop Box	471	2,710	\$264,646.75	\$1,329,151.85
Mailed	16,218	141,357	\$13,412,479.17	\$119,588,428.74
Office Payment	33	279	\$9,164.21	\$92,476.82
Drive Thru	4,328	34,409	\$2,592,898.32	\$21,239,653.30
Kubra Cash	211	1,540	\$36,005.24	\$286,175.18
Check Free	6,733	53,404	\$2,183,831.21	\$17,085,752.90
Kubra ACH	18,199	140,694	\$5,058,455.20	\$41,683,293.63
Collection Agency	160	160	\$50,686.32	\$135,673.27
Kubra CC/EZPAY	24,037	190,533	\$4,799,142.01	\$39,961,649.70
Lobby Walk-Ins	2,331	18,377	\$978,046.53	\$7,697,519.45
Direct Debit	32,401	223,614	\$8,339,049.66	\$69,667,082.31



## Gainesville Regional Utilities Authority Agenda Item Report

---

**File Number:** 2025-548

**Agenda Date:** July 9, 2025

**Department:** Gainesville Regional Utilities

**Title:** GRU Review (B)

**Department:** Gainesville Regional Utilities/Office of the Chief Executive Officer

**Description:** The GRU Review has been added to the agenda as a recurring item in order to update the Board on the significant and most meaningful events since the last board meeting. The GRU Review isn't meant to replace all the granularity of the State of the Utility (which is included under the consent agenda), it is intended to supplement it and can evolve over time depending on the requirements set forth by the Board.

**Fiscal Note:** None

**Recommendation:** No action required by the Board other than to listen and ask questions about the presentation.

# GRU Review

Last month – June 2025

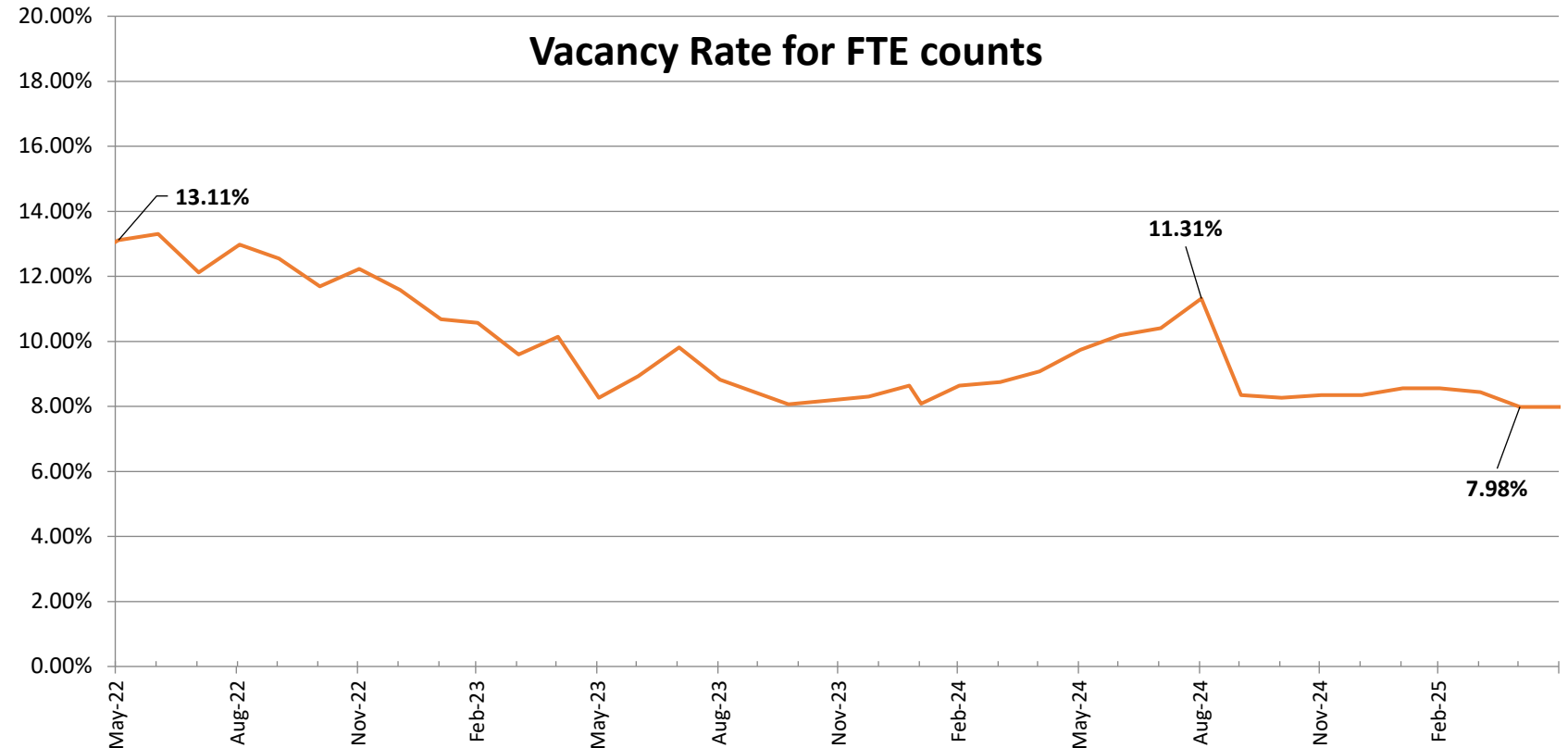


**CUSTOMER FIRST**

ONE UTILITY. ONE GOAL.

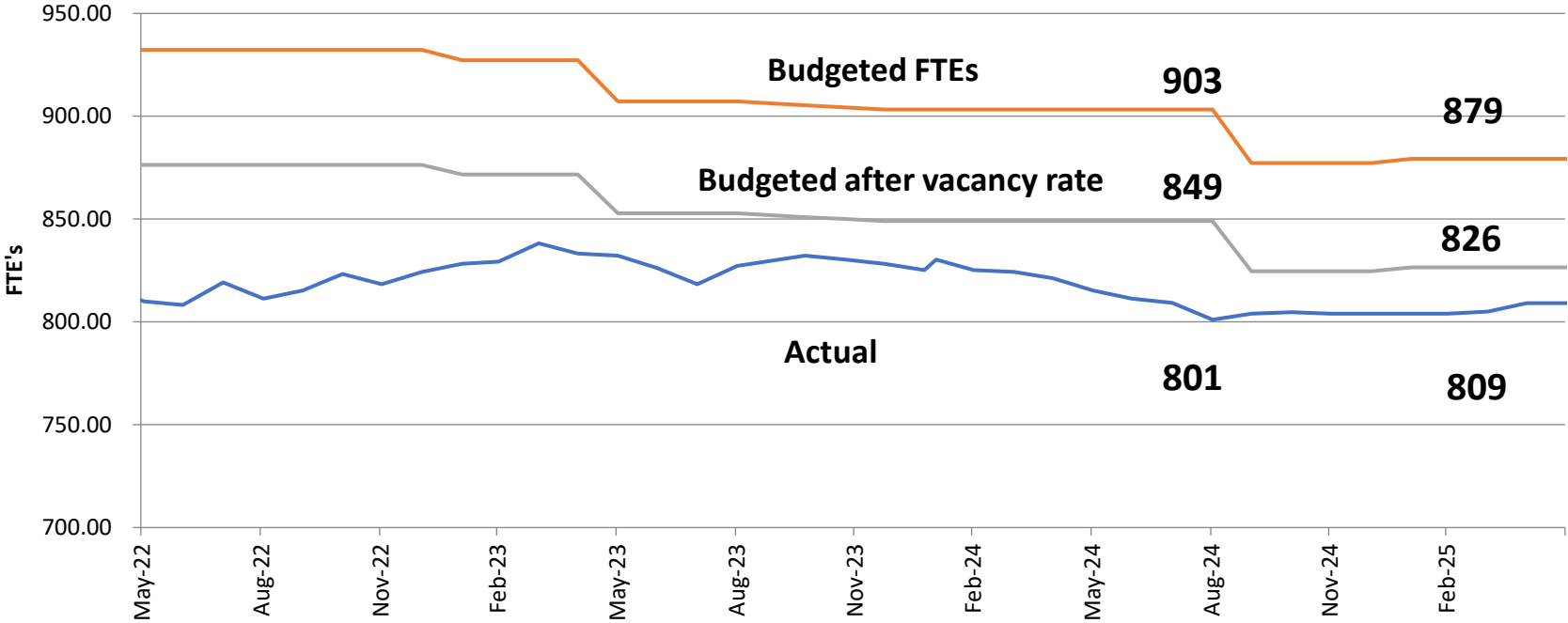


- Filling positions across organization
- Reducing vacancy rates from highs of ~ 14% in 2022 and 11% in 2023



Regular Full Time Equivalents (FTEs)

- Filling positions but still under budget



# Change of Plans

- State approved a Claims case for ~ 11 million – GRU has paid it
- Kelly plant – been on reduced load due to combustion issues
- Last natural gas prepayment is on hold – market conditions

- Fact or Fiction series in Alachua Chronicle
  - #1 The city is in a problem of its own making
  - #2 GRU bills are affordable
  - #3 City is ignoring the will of the people
- Summer campaign to promote conservation
  - 8 Local artists on the art of keeping cool
- Speaking at FMEA annual conference on July 24th
- Customer First continues
  - LEEP will hit \$10 M milestone this year and 2,500 homes retrofitted.

- **Information Technology – Software upgrades**
  - Financial Management Information Systems (FMIS) – in process
  - Customer Information Systems (CIS) – in process
  - Success Factors – in process
  - Customer Portal – working toward arrangement with Vertex1 and SEW
  - Requiring involvement of up to 100 employees across organization



- Appeal of Judge Wright's May 19<sup>th</sup> judgement
  - GRU filed to First District Court of Appeals (DCA) on June 4<sup>th</sup>
  - City made motion to expedite on June 17<sup>th</sup>
- Emergency Motion for Stay in Judge Wright's court
  - GRU filed in Circuit Court for an Order to Stay on June 18<sup>th</sup>
  - City filed oppositional brief on June 20<sup>th</sup>
  - GRU filed reply to City's opposition on xxx
- Fults/Mermer Petition for Writ of Quo Warranto filed on Feb 3<sup>rd</sup>
  - Hearing on GRUA's Motion to Dismiss set July 2<sup>nd</sup> cancelled when Fults/Mermer voluntarily dismissed case that morning
- Forthcoming lawsuit authorized by GRUA at June 11<sup>th</sup> meeting