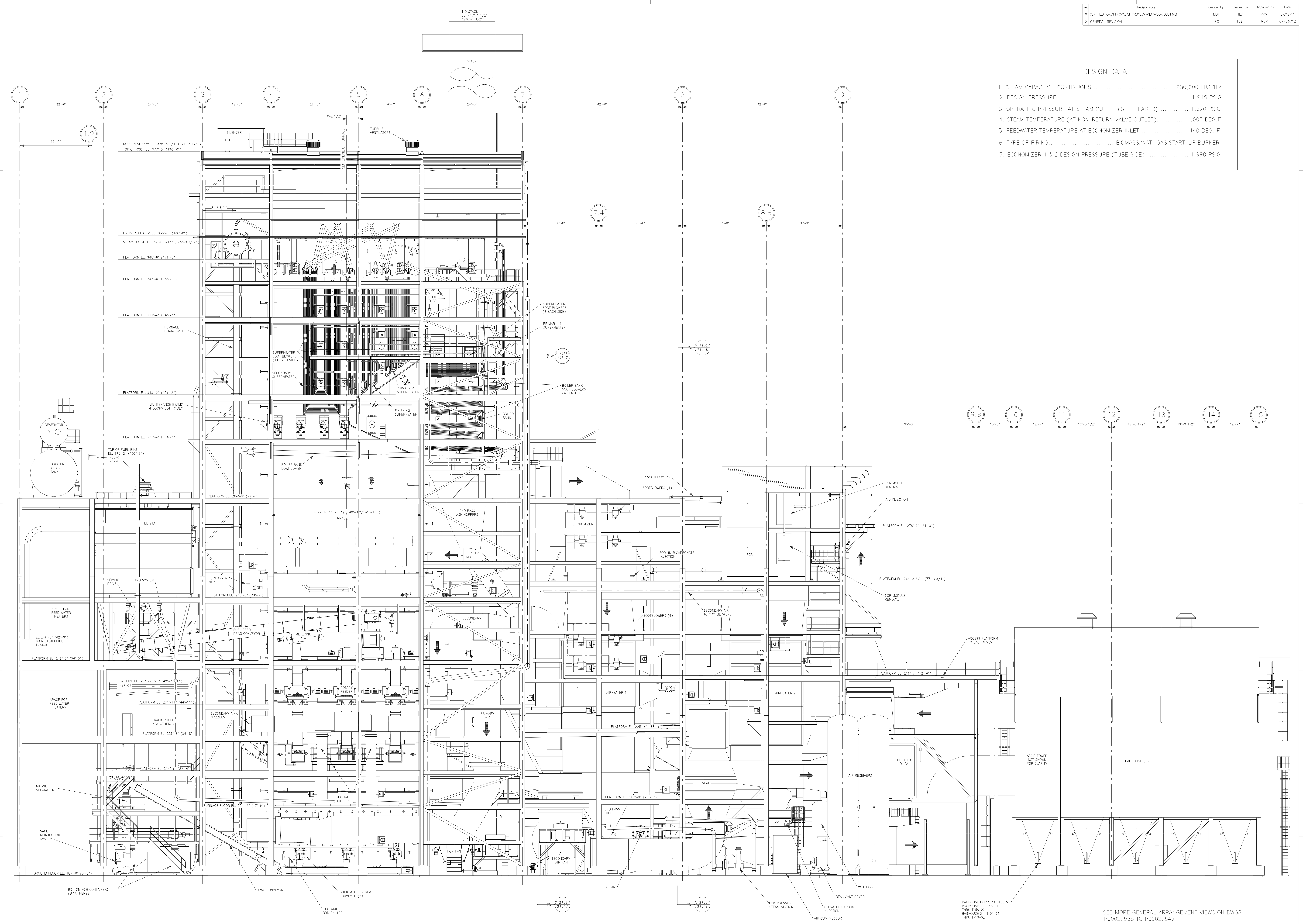


No.	Reason	Created by	Checked by	Approved by	Date
0	CERTIFIED FOR APPROVAL OF PROCESS AND MAJOR EQUIPMENT	MBL	TLS	RRM	07/13/11
2	GENERAL REVISION	LBC	TLS	RSK	07/06/12

DESIGN DATA

1. STEAM CAPACITY - CONTINUOUS..... 930,000 LBS/HR
2. DESIGN PRESSURE..... 1,945 PSIG
3. OPERATING PRESSURE AT STEAM OUTLET (S.H. HEADER)..... 1,620 PSIG
4. STEAM TEMPERATURE (AT NON-RETURN VALVE OUTLET)..... 1,005 DEG. F
5. FEEDWATER TEMPERATURE AT ECONOMIZER INLET..... 440 DEG. F
6. TYPE OF FIRING..... BIOMASS/NAT. GAS START-UP BURNER
7. ECONOMIZER 1 & 2 DESIGN PRESSURE (TUBE SIDE)..... 1,990 PSIG



ELEVATION VIEW  
LOOKING EAST

1. SEE MORE GENERAL ARRANGEMENT VIEWS ON DWGS. P00029535 TO P00029549

		This document is the exclusive intellectual property of Metso Corporation and/or its subsidiaries and is furnished solely for operating and maintaining the specific project. Reuse of the document for any other project or purpose is prohibited. The document or the information shall not be reproduced, copied or disclosed to a third party without prior written consent of the company.		Scale 1/8"=1'-0"
Proj. no. GRECBFB / 190022	Proj. name GREC, LLC - GAINESVILLE, FL	Code 09063	Status CERTIFIED FOR CONSTRUCTION	Revision 2
Title GENERAL ARRANGEMENT SECTIONAL SIDE VIEW			Doc. id P00029534	Date 07/06/12