

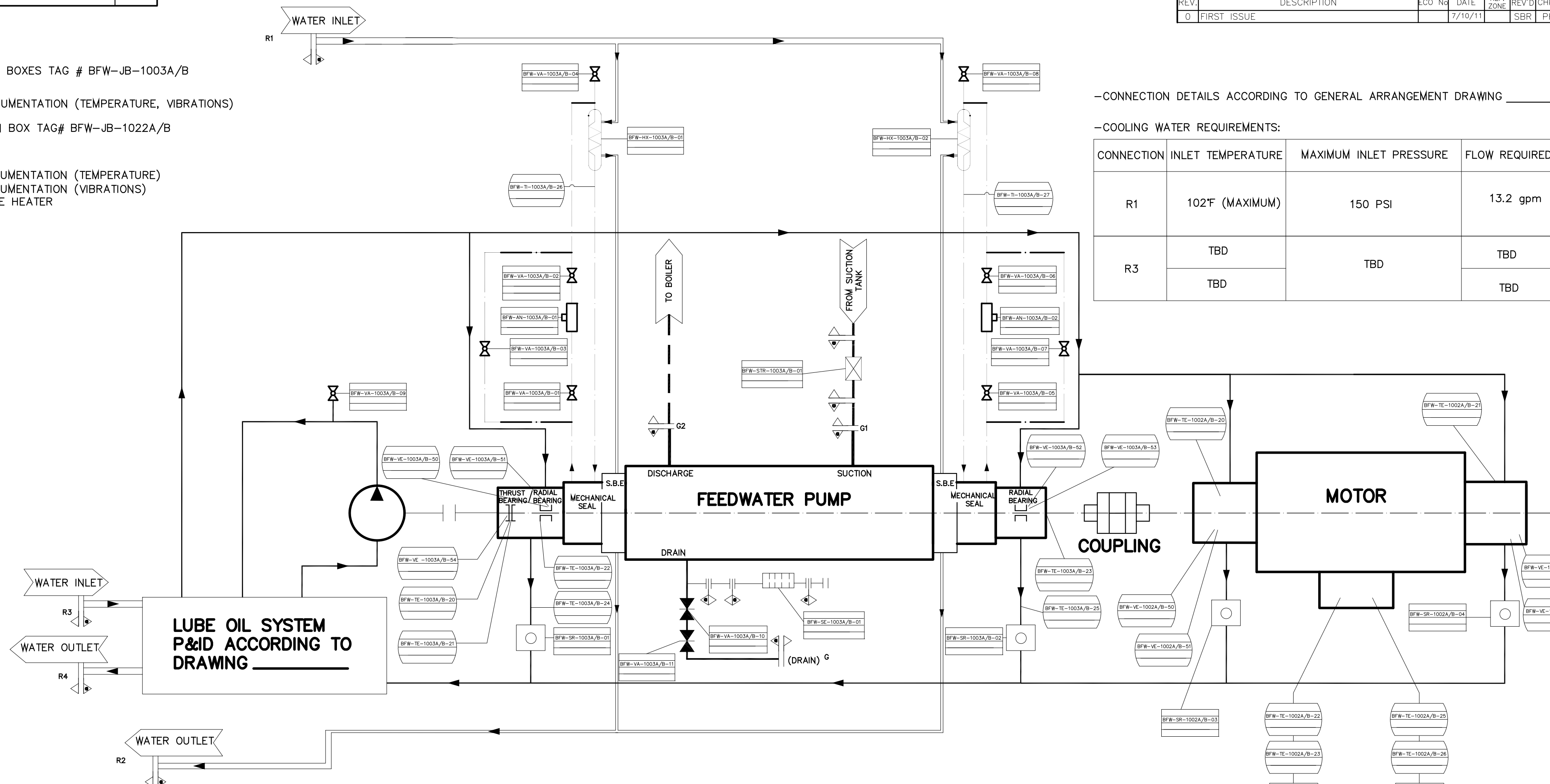
REVISIONS						
REV.	DESCRIPTION	ECO No	DATE	REF. ZONE	REV'D	CHKD APPVL
0	FIRST ISSUE		7/10/11		SBR	PH JJ

- JUNCTION BOXES TAG # BFW-JB-1003A/B
 PUMP
 - INSTRUMENTATION (TEMPERATURE, VIBRATIONS)
 JUNCTION BOX TAG# BFW-JB-1022A/B
 MOTOR
 - MAIN
 - INSTRUMENTATION (TEMPERATURE)
 - INSTRUMENTATION (VIBRATIONS)
 - SPACE HEATER

-CONNECTION DETAILS ACCORDING TO GENERAL ARRANGEMENT DRAWING _____

-COOLING WATER REQUIREMENTS:

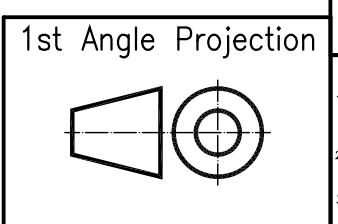
CONNECTION	INLET TEMPERATURE	MAXIMUM INLET PRESSURE	FLOW REQUIRED
R1	102°F (MAXIMUM)	150 PSI	13.2 gpm
R3	TBD	TBD	TBD
	TBD		TBD



LEGEND	
	FEED WATER PIPING
	COOLING WATER PIPING
	LUBE OIL PIPING
	DRAIN PIPING
	SEALING WATER PIPING
	SUPPLIED BY FLOWSERVE
	SUPPLIED BY DRIVER SUPPLIER
	SUPPLIED BY LUBE OIL SYSTEM SUPPLIER
	SUPPLIED BY HYDROCOUPLING / GEAR SUPPLIER
	SUPPLIED BY CUSTOMER
	GATE VALVE
	BALL VALVE
	NEEDLE VALVE
	PREWARMING ORIFICE
	SIGHT FLOW INDICATOR
	INSTRUMENT
	VALVE/COMPONENT
	MINIMUM FLOW VALVE
	STRAINER

LEGEND:

TE - RTD / THERMOCOUPLE
 TE - LOCAL TEMPERATURE INDICATOR
 SE - RADIAL PROXIMITY PROBE
 AN - SIGHT FLOW INDICATOR
 VA - VALVE
 SR - MAGNETIC SEPARATOR
 HX - HEAT EXCHANGER



P.O. NUMBER: 104009	FLOW: 2175 gpm
END USER: Gainesville Renewable Energy	HEAD: 5580 ft
JOB: FAGEN GAINESVILLE	BHP: 3451,1 BHP
PLANT: FAGEN GAINESVILLE	EFFICIENCY: 82,5%
UNIT: 6X15WXH-7	RPM: 3580 rpm
SERVICE: BFP	FLUID: Feedwater
ITEM: M-151532 / M-151533	TEMPERATURE: 278 °F
SERIAL No.:	S.G.: 929 kg/ m3
CUSTOMER INFORMATION	
OPERATING CONDITIONS	

STATUS OF APPROVAL	
ORDER No. COS-11-10P40239	DATE 21/09/11
DRAWN BY D	DATE 10/10/11
CHECKED BY PH	DATE 26/10/11
APPROVED BY PH	DATE 26/10/11
CAD FILENAME: COS-11-10P40239-1900	

PROPRIETARY NOTE
 THIS MATERIAL IS THE PROPERTY OF FLOWSERVE INTERNATIONAL INC. AND IS FURNISHED ONLY FOR THE PURPOSE INDICATED. ANY AND ALL CONFIDENTIAL, PROPRIETARY, PATENT AND OTHER RIGHTS IN THE SUBJECT MATTER BEING RETAINED INCLUDING, BUT NOT LIMITED TO, ALL RIGHTS OF USE AND/OR MANUFACTURE AND/OR FOR SALE OR REPRODUCTION OF THIS MATERIAL. NO PART OR PORTION OF THIS MATERIAL SHALL BE REPRODUCED, COPIED, OR TRANSMITTED IN ANY FORM OR BY ANY MEANS, ELECTRONIC OR MECHANICAL, INCLUDING PHOTOCOPYING, RECORDING, OR BY ANY INFORMATION STORAGE AND RETRIEVAL SYSTEM, WITHOUT THE EXPRESS WRITTEN PERMISSION OF FLOWSERVE INTERNATIONAL INC. PERMISSION TO REPRODUCE THIS MATERIAL IN WHOLE OR IN PART, OR TO MANUFACTURE THE SUBJECT MATTER SHOWN THEREIN OR USE THE CONFIDENTIAL OR PROPRIETARY INFORMATION THEREIN, SUCH PERMISSION TO BE GRANTED ONLY BY SPECIFIC AUTHORIZATION IN WRITING SIGNED BY AN OFFICER OR OTHER AUTHORIZED AGENT OF FLOWSERVE CO. DIVISIONS OR SUBSIDIARIES.

APPROVAL NOTE TO CUSTOMER
 1.-PURCHASER'S COMMENTS AND/OR CORRECTIONS, WITHIN THE SCOPE OF CONTRACT, WILL BE MADE ON THE FIRST COMPLETED CERTIFIED DRAWING SUBMITTED BY FLOWSERVE CORPORATION AND RETURNED.
 2.-CORRECTIONS, ALTERATIONS, ADDITIONS AND MODIFICATIONS OUTSIDE SCOPE OF CONTRACT OR MADE AFTER FIRST SUBMITTAL MAY REQUIRE AN ADDITIONAL ENGINEERING SERVICE CHARGE.
 3.-ITEMS CONDITIONALLY APPROVED OR WITH DEFERRED APPROVAL BY PURCHASER, MUST BE SPECIFICALLY STATED OTHERWISE DELIVERY MAY BE EFFECTED.

FLOWSERVE Coslada Operations		
DWG TITLE: PIPING & INSTR. DIAGRAM PUMP TYPE 6X15WXH-7		
SIZE A2	DRAWING NO. 6X15WXH823XE52	REV. A
SCALE NTS	UNITS mm	SHEET NO. 1/1
		n/p