

TIE IN SCHEDULE

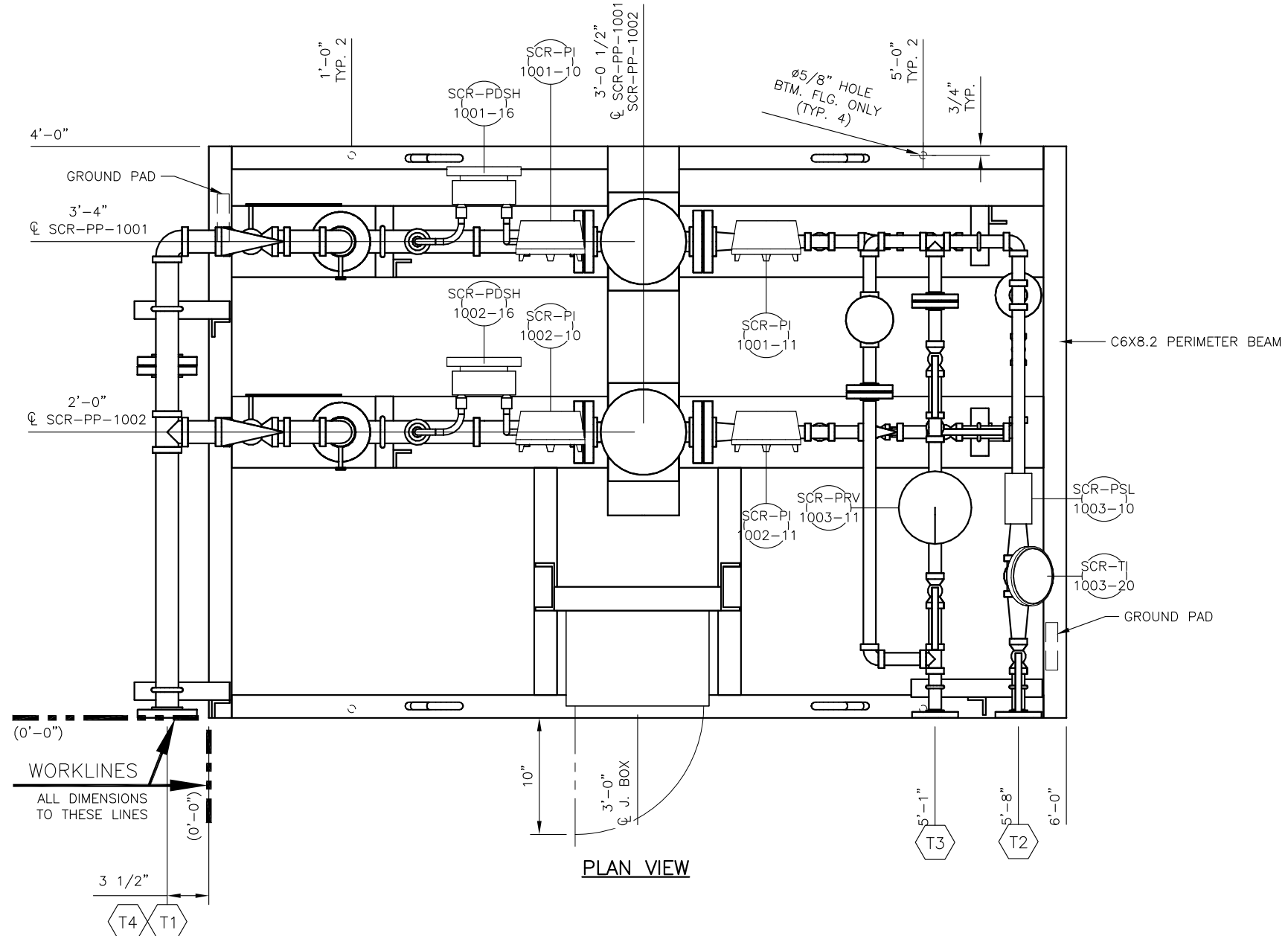
MK	DESCRIPTION	SIZE/TYPE
T1	PUMP SUCTION	1 1/2" 150# RF 304SS
T2	TO SCR SYSTEMS	3/4" 150# RF 304SS
T3	RECIR. TO STORAGE TANKS	3/4" 150# RF 304SS
T4	SERVICE WATER FLUSH	1 1/2" 150# RF 304SS



CERTIFIED
Klk 09/25/2012 4:54:43 PM



By Andy Bilmanis on Oct 09, 2012
This review does not supersede requirements of purchase order, design drawings, specifications, codes or regulations. The contractor / supplier is not relieved from responsibility for errors or omission.



PLAN VIEW

- NOTES:
- FOR ELEVATION VIEW SEE DWG. NO.: G-25015-02.
 - FOR END VIEW SEE DWG. NO.: G-25015-03.
 - FOR ISO VIEW SEE DWG. NO.: G-25015-04.
 - ALL DIMENSIONS ± 1/4".



INTEGRATED FLOW SOLUTIONS
6461 REYNOLDS RD, TYLER, TEXAS, USA 75708
PHONE NUMBER: +1 (903) 595-6511
EMAIL: SUPPORT@IFSOLUTIONS.COM

REV.	DATE	DESCRIPTION	DES	ENG
2	18JUL12	REVISED PER CUSTOMER COMMENTS	RM	RC
1	25JUN12	REVISED SUCTION PIPING AND TAGGING	RM	RC
0	27FEB12	APPROVED FOR CONSTRUCTION	RM	RC
B	06JAN12	ISSUED FOR CUSTOMER APPROVAL	RM	RC
A	15DEC11	ISSUED FOR CUSTOMER APPROVAL	RM	RC

PROJECT: GAINESVILLE RENEWABLE ENERGY CENTER (GREC)
CUSTOMER NAME: FUEL TECH
END USER: GAINESVILLE RENEWABLE ENERGY CENTER (GREC)
SYSTEM DESCRIPTION: FORWARDING SKID
CUSTOMER PO#: 34081-1
ESTIMATED DRY WEIGHT: 1500 LBS.
ESTIMATED OPERATING WEIGHT: 1550 LBS.

GENERAL ARRANGEMENT FORWARDING SKID

CLIENT No.: P00090758				
SCALE: 1"=1'-0"	SECTION	JOB	SHEET	TOTAL SHEETS
PM.: D. POLLAN	G - 25015 - 01		4	2

THIS DRAWING IS THE PROPERTY OF INTEGRATED FLOW SOLUTIONS AND SHALL NOT BE REPRODUCED, COPIED, LENT, NOR USED FOR ANY PURPOSE OTHER THAN THAT WHICH IT IS FURNISHED EXCEPT BY WRITTEN PERMISSION.