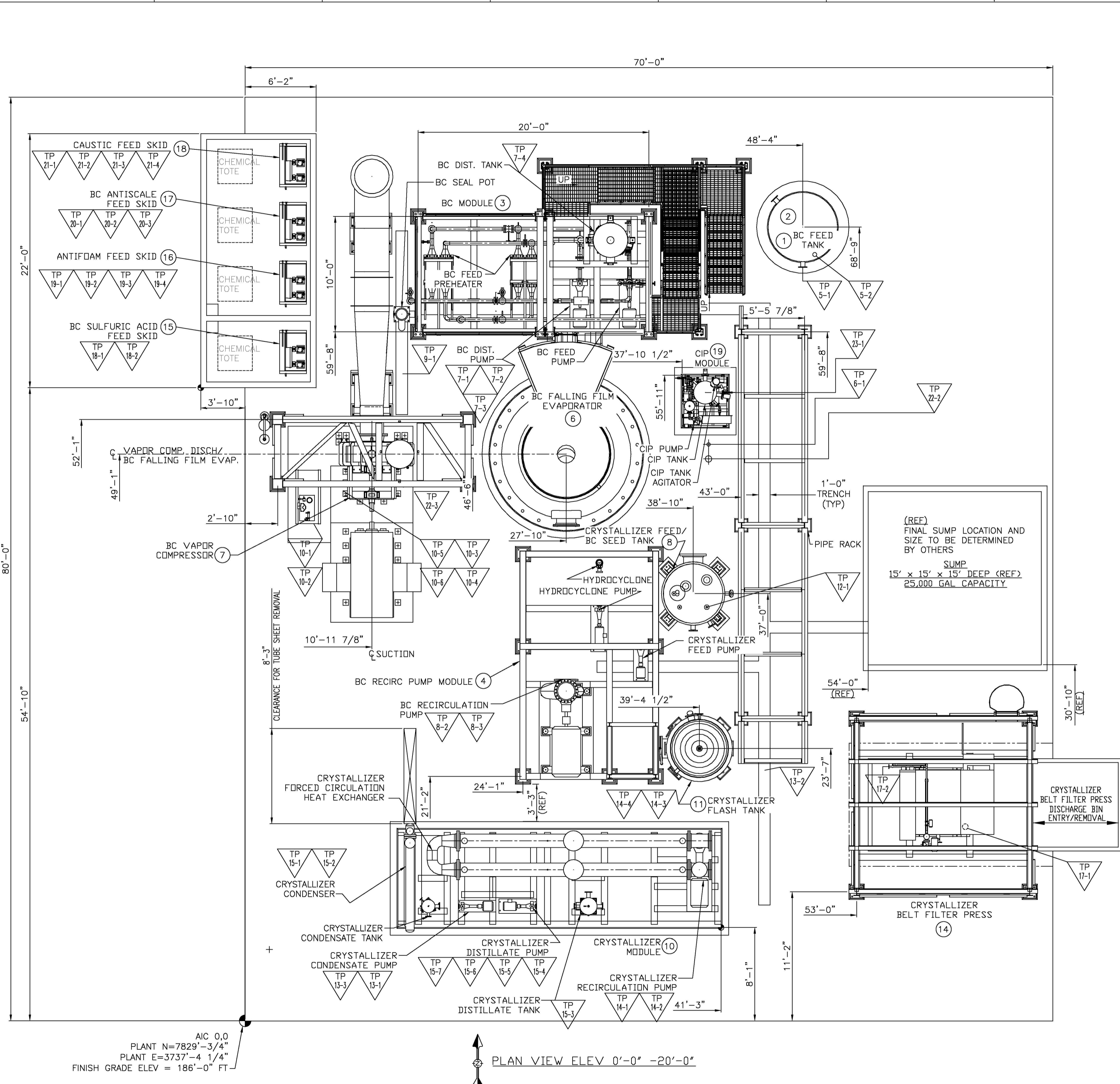
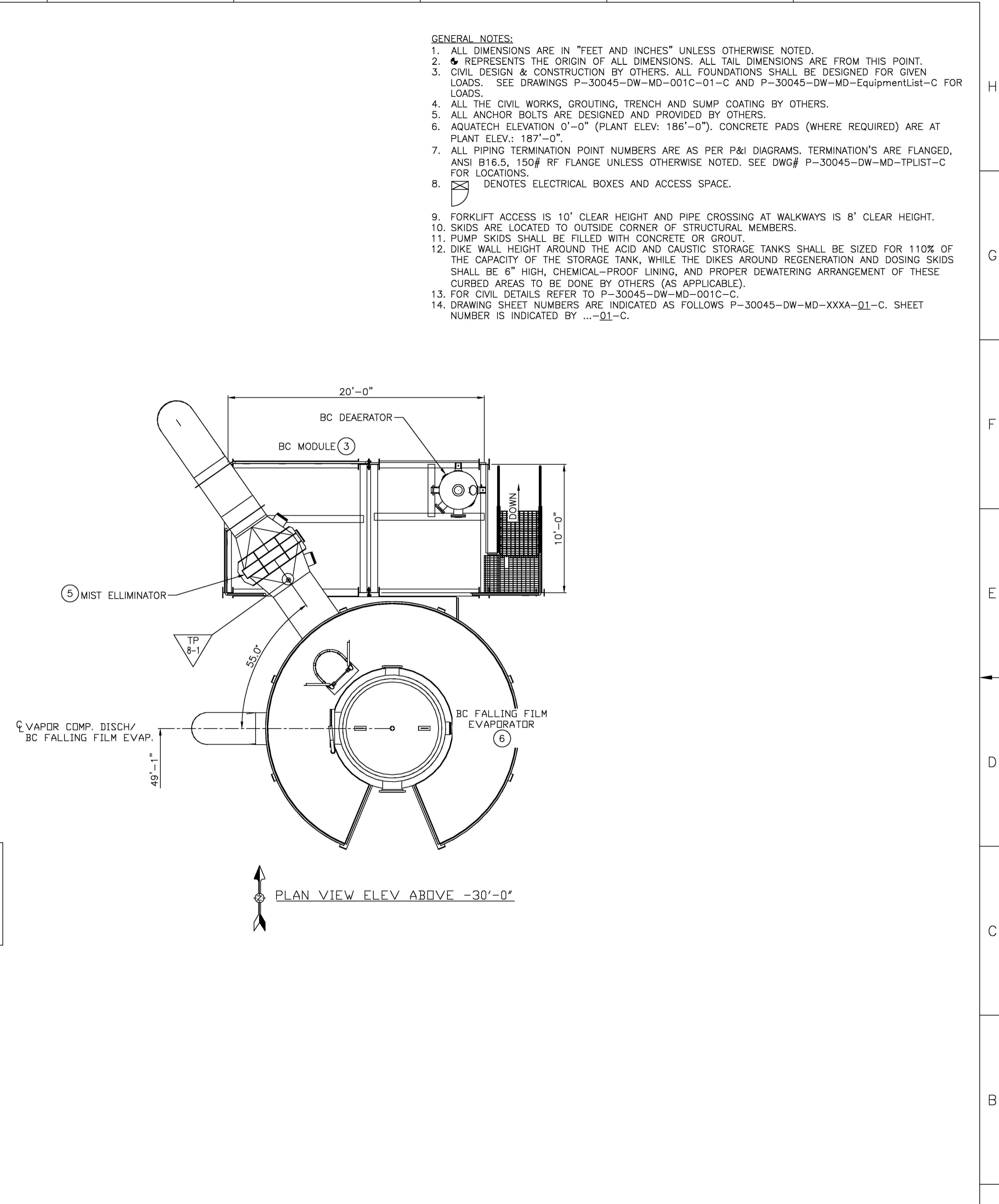


IF INFORMATION IS UNCLEAR CONTACT A/C MECHANICAL ENGINEERING BEFORE USING THIS DRAWING FOR FABRICATION OR INSTALLATION



A/C 0,0
 PLANT N=7829'-3/4"
 PLANT E=3737'-4 1/4"
 FINISH GRADE ELEV = 186'-0" FT

PLAN VIEW ELEV 0'-0" -20'-0"



- GENERAL NOTES:**
1. ALL DIMENSIONS ARE IN "FEET AND INCHES" UNLESS OTHERWISE NOTED.
 2. ● REPRESENTS THE ORIGIN OF ALL DIMENSIONS. ALL TAIL DIMENSIONS ARE FROM THIS POINT.
 3. CIVIL DESIGN & CONSTRUCTION BY OTHERS. ALL FOUNDATIONS SHALL BE DESIGNED FOR GIVEN LOADS. SEE DRAWINGS P-30045-DW-MD-001C-01-C AND P-30045-DW-MD-EquipmentList-C FOR LOADS.
 4. ALL THE CIVIL WORKS, GROUTING, TRENCH AND SUMP COATING BY OTHERS.
 5. ALL ANCHOR BOLTS ARE DESIGNED AND PROVIDED BY OTHERS.
 6. AQUATECH ELEVATION 0'-0" (PLANT ELEV. 186'-0"). CONCRETE PADS (WHERE REQUIRED) ARE AT PLANT ELEV.: 187'-0".
 7. ALL PIPING TERMINATION POINT NUMBERS ARE AS PER P&I DIAGRAMS. TERMINATION'S ARE FLANGED, ANSI B16.5, 150# RF FLANGE UNLESS OTHERWISE NOTED. SEE DWG# P-30045-DW-MD-TPLIST-C FOR LOCATIONS.
 8. ☒ DENOTES ELECTRICAL BOXES AND ACCESS SPACE.
 9. FORKLIFT ACCESS IS 10' CLEAR HEIGHT AND PIPE CROSSING AT WALKWAYS IS 8' CLEAR HEIGHT.
 10. SKIDS ARE LOCATED TO OUTSIDE CORNER OF STRUCTURAL MEMBERS.
 11. PUMP SKIDS SHALL BE FILLED WITH CONCRETE OR GROUT.
 12. DIKE WALL HEIGHT AROUND THE ACID AND CAUSTIC STORAGE TANKS SHALL BE SIZED FOR 110% OF THE CAPACITY OF THE STORAGE TANK, WHILE THE DIKES AROUND REGENERATION AND DOSING SKIDS SHALL BE 6" HIGH. CHEMICAL-PROOF LINING AND PROPER DEWATERING ARRANGEMENT OF THESE CURBED AREAS TO BE DONE BY OTHERS (AS APPLICABLE).
 13. FOR CIVIL DETAILS REFER TO P-30045-DW-MD-001C-C.
 14. DRAWING SHEET NUMBERS ARE INDICATED AS FOLLOWS P-30045-DW-MD-XXXA-01-C. SHEET NUMBER IS INDICATED BY ...-01-C.

ISSUE	DETAILED DESCRIPTION	ISSUE	DETAILED DESCRIPTION	ISSUE	DETAILED DESCRIPTION
01	1. ADDED TP'S: 5-2, 7-1, 2, 3, 4, 8-1, 2, 3, 10-1, 2, 3, 4, 5, 8, 12-1, 13-3, 14-1, 2, 3, 4, 15-3, 4, 5, 6, 7, 17-1, 2, 18-3, 4, 20-3, 4, 21-3, 4, AND 23-1. DELETED TP'S: 9-2 AND 9-3. 2. MIRROR'D CRYSTALLIZER MODULE (10), MOVED CRYSTALLIZER BELT FILTER PRESS (14), BC FEED TANK (1), AND MADE BC MODULE (3) LONGER IN EAST DIRECTION. 3. MOVED SUMP AND ADDED (REF) SIZE/LOCATION NOTE. 4. ADDED CIP MODULE (19).				

01	SEE DETAILED DESCRIPTION	NCB	9/29/11	NCB	DJH	NKM
00	PRELIMINARY ISSUE	NCB	9/1/11	NCB	DJH	NKM
ISSUE	GENERAL DESCRIPTION	BY	DATE (M/D/Y)	DESIGNED	CHECKED	APPROVED

AQUATECH INTERNATIONAL CORPORATION
 1 FOUR CORNS DRIVE, GAINESVILLE, FL 32617
 USA

PROJECT: GAINESVILLE RENEWABLE ENERGY CENTER
 CUSTOMER: FAGEN INC.
 LOCATION: GAINESVILLE, FLORIDA

DRAWING NO. P-30045-DW-MD-001G-01-C
 SHEET NO. 1