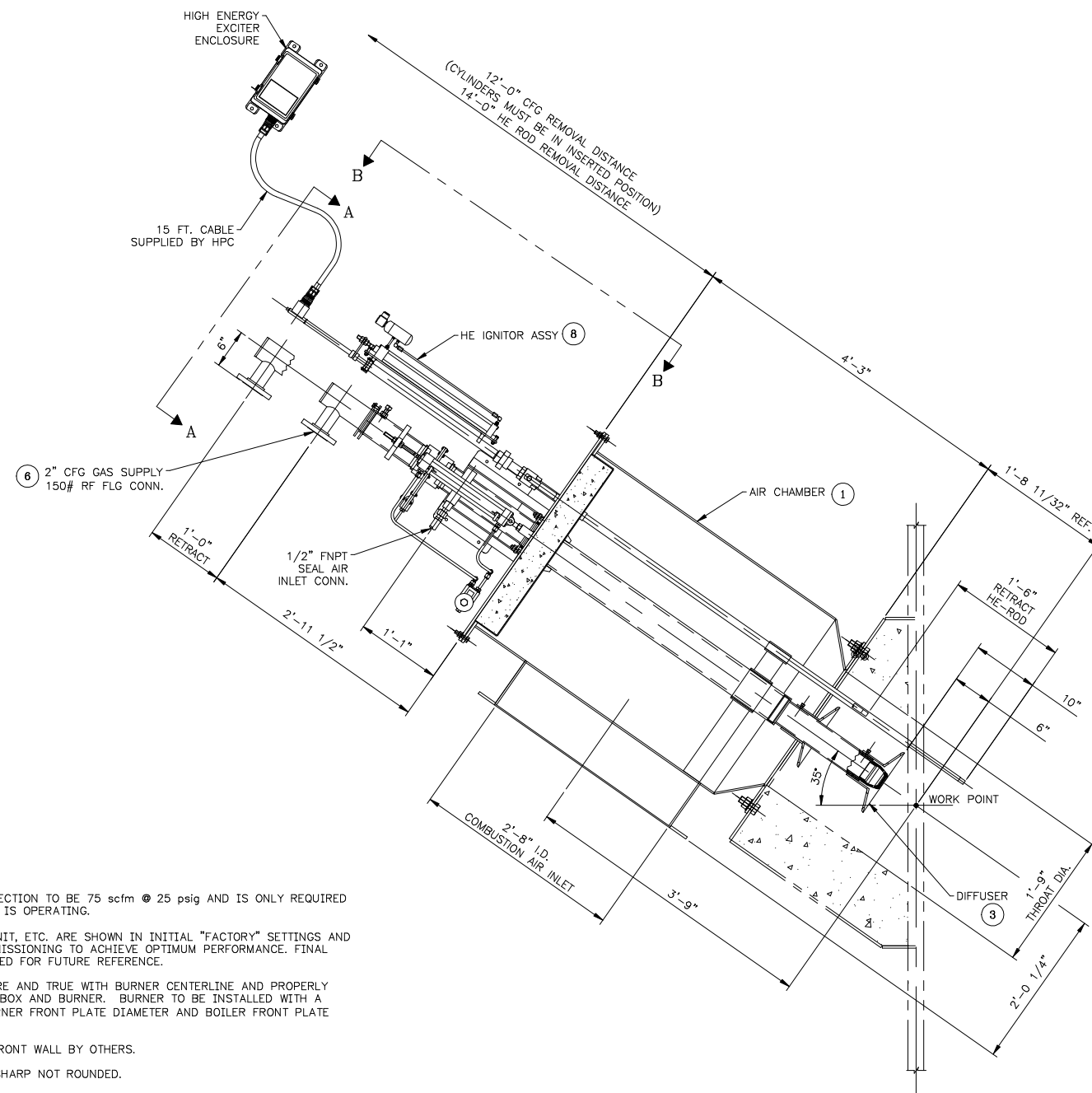
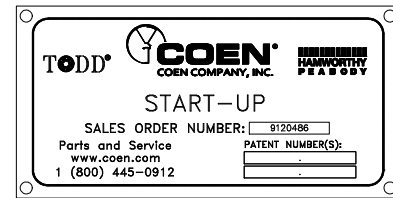
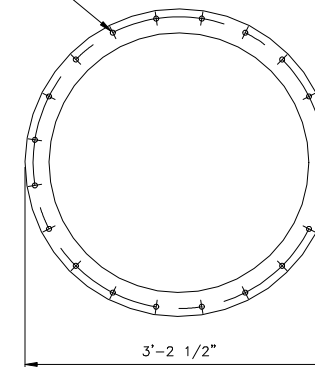


ITEM	QTY.	DESCRIPTION	DWG #	PART #
		BURNER ASSEMBLY (WORK ORDER)		
1	1	AIR CHAMBER ASSEMBLY		
2	1	REMOVABLE CENTER ASSEMBLY		
3	1	DIFFUSER (xx" O.D.)		
4	1	SIGHTPORT	SP-ASS	1045232
5	1	SCANNER MOUNT	2401-644	2401-644-01
6	1	CFG ASSEMBLY		
7	1	NAME PLATE		
8	1	IGNITOR (WORK ORDER)		
		IGNITOR ASSEMBLY (HE SPARK ROD LENGHT XX)		
		HARNESS (LENGTH 15 FT.)		
		HIGH ENERGY EXCITER ENCLOSURE		

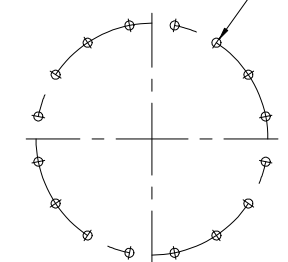


(20) 5/8" DIA. HOLES
EQUALLY SPACED
STRADDLING 4'S
ON A 3'-0 1/2" P.C.D.

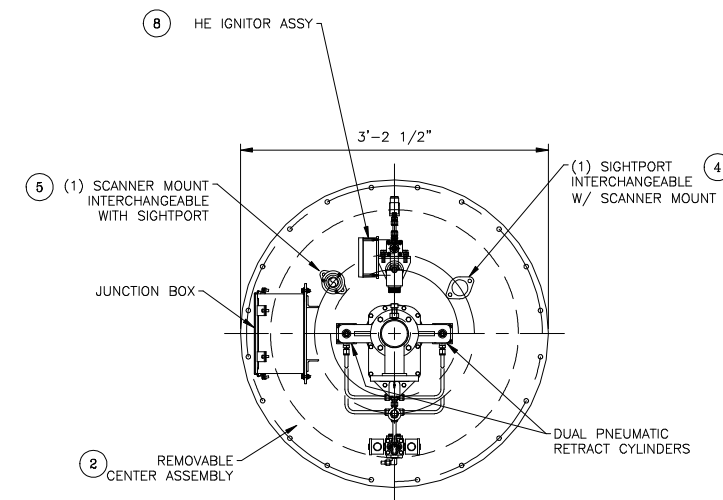


COMBUSTION AIR FLANGE

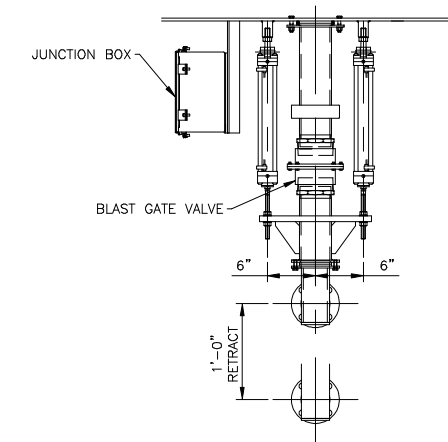
(16) 1 1/8" DIA. HOLES
TO ACCEPT 1 - 8 UNC
X 2 1/2" LG. BOLTS
EQUALLY SPACED
STRADDLING 4'S
ON A 2'-5" B.C.



BOILER MOUNTING DETAIL



SECTION A-A



SECTION B-B
(HE IGNITOR NOT SHOWN FOR CLARITY)

NOTES:

- AIR SEAL REQUIREMENTS AT EACH CONNECTION TO BE 75 scfm @ 25 psig AND IS ONLY REQUIRED DURING EQUIPMENT REMOVAL IF BURNER IS OPERATING.
- POSITION FOR SWIRLER, IGNITOR, OIL UNIT, ETC. ARE SHOWN IN INITIAL "FACTORY" SETTINGS AND MAY REQUIRE ADJUSTMENT DURING COMMISSIONING TO ACHIEVE OPTIMUM PERFORMANCE. FINAL POSITIONS SHOULD BE MARKED AND NOTED FOR FUTURE REFERENCE.
- BOILER FRONT PLATE TO BE FLAT, SQUARE AND TRUE WITH BURNER CENTERLINE AND PROPERLY STIFFENED TO SUPPORT WEIGHT OF WINDBOX AND BURNER. BURNER TO BE INSTALLED WITH A CONCENTRICITY OF ± 1/8" BETWEEN BURNER FRONT PLATE DIAMETER AND BOILER FRONT PLATE OPENING.
- WINDBOX IS TO BE BOLTED TO BOILER FRONT WALL BY OTHERS.
- BURNER THROAT TRAILING EDGE TO BE SHARP NOT ROUNDED.
- BURNER REFRACTORY THROAT AND REFRACTORY ANCHORS TO BE SUPPLIED AND INSTALLED BY OTHERS. PLASTIC REFRACTORY THROAT: A.P. GREEN HIGH ALUMINA PLASTIC PLUS OR EQUAL 70% ALUMINA (AIR CURE) PLASTIC. INSTALL AND CURE PER MANUFACTURERS INSTRUCTIONS. THROAT SWEEP/QUARL FORMER PROVIDED BY HAMWORTHY PEABODY COMBUSTION MUST BE USED TO FORM THIS THROAT, REMOVE PRIOR TO LIGHTING OFF BURNER.
- DO NOT SCALE THIS DRAWING. DIMENSIONS SHOWN ARE IN INCHES.
- ALL PAINTING PER COEN COMPANY PAINT SPECIFICATION.
- FOR COMPONENT DETAILS, MATERIAL SPECIFICATIONS AND BURNER DESIGN SPECIFICATIONS, REFER TO THE COEN ENGINEERING DATA SHEET.
- ALL INTERCONNECTING PIPING TO BE SUPPLIED & INSTALLED BY OTHERS.
- EXISTING EQUIPMENT SHOWN IN PHANTOM FOR CLARITY.
- INSTALL ALL HOSES WITHOUT UNDUE TENSION OR KINKS.

This drawing is the property of Coen Company, Inc. and contains confidential and proprietary information, either owned or licensed by Coen Company, Inc. This Drawing shall not be copied, traced, photographed, or reproduced in any manner, nor used for any purpose whatsoever, except by written permission of Coen Company, Inc. This drawing shall be returned to Coen Company, Inc. upon request. Copyright 2010, Coen Company, Inc. All rights reserved.

FOR: METSO POWER	TODD COEN COEN COMPANY, INC. HAMWORTHY PEABODY	
USER: GAINSVILLE RENEWABLE ENERGY CENTER	Parts and Service 1 (800) 445-0912 www.coen.com	
JOB SITE: GAINSVILLE, FL	BURNER GENERAL ARRANGEMENT	
S.O. NO.: 9120486	DRAWING NUMBER 10-2	
P.O. NO.: 590/102998	SHEET 1 OF 1	
DR. DSM DATE: 10/17/11	CERTIFIED	REV. A
CK. DATE:	SCALE	
APP. DATE:	DATE:	

NO.	REVISION DESCRIPTION	BY	CKD	APP	DATE	APP.	DATE:	DATE:
A	SUMMITTED FOR CLIENT APPROVAL							