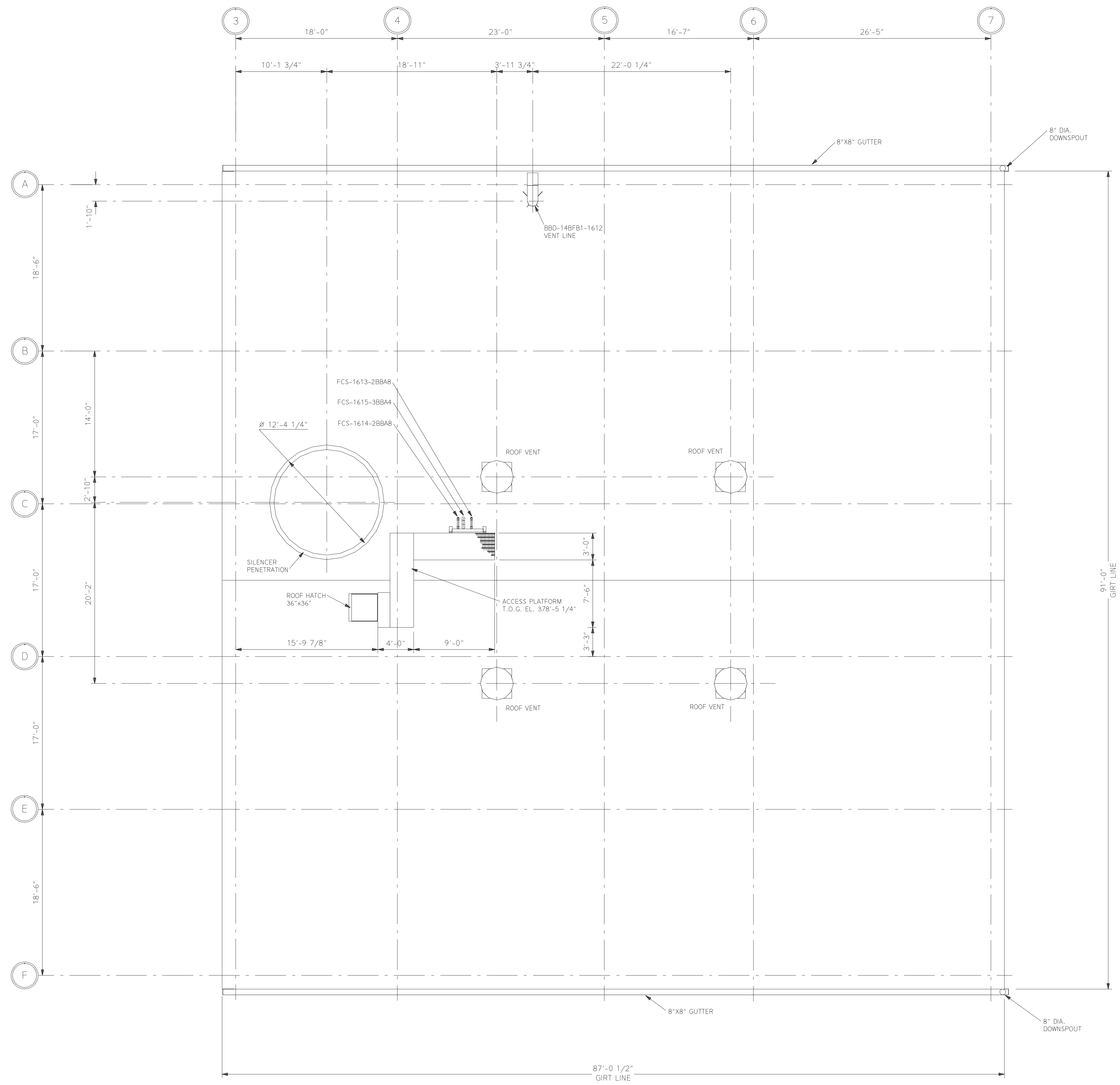
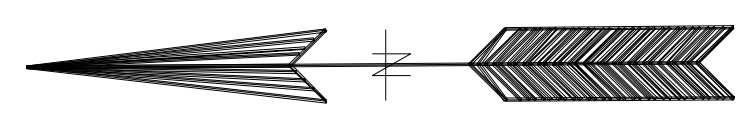


Rev	Reason/Note	Created by	Checked by	Approved by	Date
0	CERTIFIED FOR APPROVAL OF PROCESS & MAJOR EQUIPMENT	RLL	TLS	RRM	07/14/2011
1	GENERAL REVISION	LBC	TLS	RSK	07/04/2012



PARTIAL PLAN ROOF
ROOF PENETRATIONS AND
ACCESS PLATFORM

		<small>This document is the exclusive intellectual property of Metso Corporation and/or its subsidiaries and is furnished solely for operating and maintaining the specific project. Reuse of the document for any other project or purpose is prohibited. The document or the information shall not be reproduced, copied or disclosed to a third party without prior written consent of the company.</small>		<small>SCALE</small> <small>3/16"=1'</small>
<small>Proj. no.</small> GRECBFB / 190022	<small>Proj. name</small> GREC, LLC - GAINESVILLE, FL	<small>Code</small> B904.03	<small>Disc. id.</small> P00029549	<small>Revision</small> 1
<small>STATUS</small> CERTIFIED FOR CONSTRUCTION				