



More than Energy

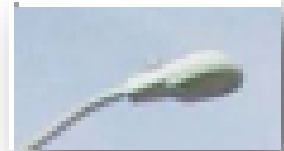
OFFICIAL RENTAL LIGHTING CATALOG

OCTOBER 1, 2022

Rental Light Rate Class (Non-Contributed):

This class of light rates are lights used by a commercial, industrial or residential customer where the monthly rental rate is paid for by the customer. The monthly Rental Light Rate includes all materials including wire, the cost of installation, maintenance and energy of the light(s). The rental rate for lights does not include the rental rate of a **pole to support the light. If a pole is necessary to support a rental light, a separate pole rental rate shall be charged in addition to the rental rate for the light. The monthly Pole Rental Rate includes all materials including wire, the cost of installation and maintenance of the pole(s). The pole shall also be rented under this same class. GRU owns all lights and poles. NOTE: Monthly Rates DO NOT include Fuel Adjustment Charges, Fees, or Taxes

LIGHT TYPE	CODE	*RATE
LED ROADWAY 1 GRAY	L38	\$ 18.15
LED ROADWAY 2 GRAY	L39	\$ 22.17
LED ROADWAY 3 GRAY	L40	\$ 24.01
LED ROADWAY 4 GRAY	L41	\$ 30.30
LED ROADWAY 2 BLACK	L42	\$ 23.33
LED ROADWAY 3 BLACK	L43	\$ 25.16
LED ROADWAY 4 BLACK	L44	\$ 31.45
LED ROADWAY 5 GRAY	L45	\$ 29.55
LED ROADWAY 5 BLACK	L46	\$ 30.70
LED ROADWAY 2N GRAY	L47	\$ 22.17
LED ROADWAY 2N BLACK	L48	\$ 23.33
LED ROUND ROADWAY	L51	\$ 51.43
LED ACORN PEDESTRIAN	L52	\$ 39.42
LED TEARDROP ROADWAY 2FT	L53	\$ 53.02
LED TEARDROP ROADWAY 4FT	L54	\$ 54.42
LED PENDANT ROADWAY	L55	\$ 46.17
LED SMALL PENDANT PEDESTRIAN	L56	\$ 38.67
LED FLOODWAY1	L57	\$ 17.70
LED FLOODWAY2	L58	\$ 24.99
LED FLOODWAY3	L59	\$ 22.26



L38, L39, L40, L41



L42, L43, L44, L45, L46



L51



L52



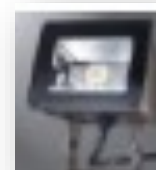
L53, L54



L55



L56



L57



L58, L59

***PUBLISHED RATES CAN BE FOUND IN THE CITY OF GAINESVILLE-
CODE OF ORDINANCES-APPENDIX A**

Rental Pole Rate Class (Non-Contributed):

POLE TYPE	CODE	*RATE
10FT DECO BLACK CONC POLE	P01	\$ 17.88
10FT BLACK FIBERGLASS POLE	P02	\$ 20.00
12FT ALUMINUM POLE	P03	\$ 8.75
18FT ALUMINUM POLE	P04	\$ 9.50
18FT BLACK DOMUS POLE	P05	\$ 27.41
19FT BLACK FIBERGLASS POLE	P06	\$ 3.75
26FT BLACK RENAISSANCE POLE	P07	\$ 41.65
30FT WOOD POLE	P08	\$ 8.80
30FT CONCRETE POLE	P09	\$ 11.38
30FT GRAY FIBERGLASS POLE	P10	\$ 20.58
30FT BLACK ALUMINUM POLE	P11	\$ 29.18
35FT WOOD POLE	P12	\$ 9.16
35FT CONCRETE POLE	P13	\$ 11.56
35FT BLACK OCT CONC POLE	P14	\$ 23.99
40FT WOOD POLE	P15	\$ 10.64
40FT CONCRETE POLE	P16	\$ 13.91
40FT BLACK OCT CONC POLE	P17	\$ 32.24
45FT WOOD POLE	P18	\$ 18.42
45FT CONCRETE POLE	P19	\$ 14.50
12FT BLACK STEEL POLE	P21	\$ 21.19

***PUBLISHED RATES CAN BE FOUND IN THE CITY OF GAINESVILLE-CODE OF ORDINANCES-APPENDIX A**



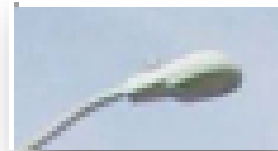
Rental Agency Light Rate Class (Contributed):

This class of light rates are lights used by a commercial, industrial or residential customer and the monthly rental rate is paid for by the customer. The Rental Agency monthly rate, which allows the agency to "Buy Down" the rental rate, includes the energy charge and normal maintenance cost ONLY. The rates for lights do not include the installation of **poles. The installation cost (materials, including wire, GRU engineering, construction cost and overheads) for lights and poles (if needed) shall be paid for up front by the customer responsible for the monthly rental charges prior to installation by GRU. The ownership of the lights and poles remains with GRU.

NOTE: Monthly Rates DO NOT include Fuel Adjustment Charges.

Fees, or Taxes

LIGHT TYPE	CODE	*RATE
LED ROADWAY 1 GRAY	L38	\$ 3.03
LED ROADWAY 2 GRAY	L39	\$ 4.93
LED ROADWAY 3 GRAY	L40	\$ 6.34
LED ROADWAY 4 GRAY	L41	\$ 10.19
LED ROADWAY 2 BLACK	L42	\$ 4.93
LED ROADWAY 3 BLACK	L43	\$ 6.34
LED ROADWAY 4 BLACK	L44	\$ 10.19
LED ROADWAY 5 GRAY	L45	\$ 9.33
LED ROADWAY 5 BLACK	L46	\$ 9.33
LED ROADWAY 2N GRAY	L47	\$ 4.93
LED ROADWAY 2N BLACK	L48	\$ 4.93
LED ROUND ROADWAY	L51	\$ 14.50
LED ACORN PEDESTRIAN	L52	\$ 7.33
LED TEARDROP ROADWAY 2FT	L53	\$ 10.49
LED TEARDROP ROADWAY 4FT	L54	\$ 10.49
LED PENDANT ROADWAY	L55	\$ 7.25
LED SMALL PENDANT PEDESTRIAN	L56	\$ 6.23
LED FLOODWAY1	L57	\$ 2.41
LED FLOODWAY2	L58	\$ 6.01
LED FLOODWAY3	L59	\$ 8.92



L38, L39, L40, L41



L42, L43, L44, L45, L46



L51



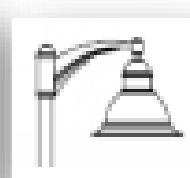
L52



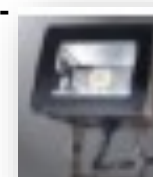
L53, L54



L55



L56



L57



L58, L59

***PUBLISHED RATES CAN BE FOUND IN THE CITY OF GAINESVILLE-
CODE OF ORDINANCES-APPENDIX A**

NOTE: A POLE RENTAL IS NOT PART OF THE AGENCY (CONTRIBUTED) PROGRAM