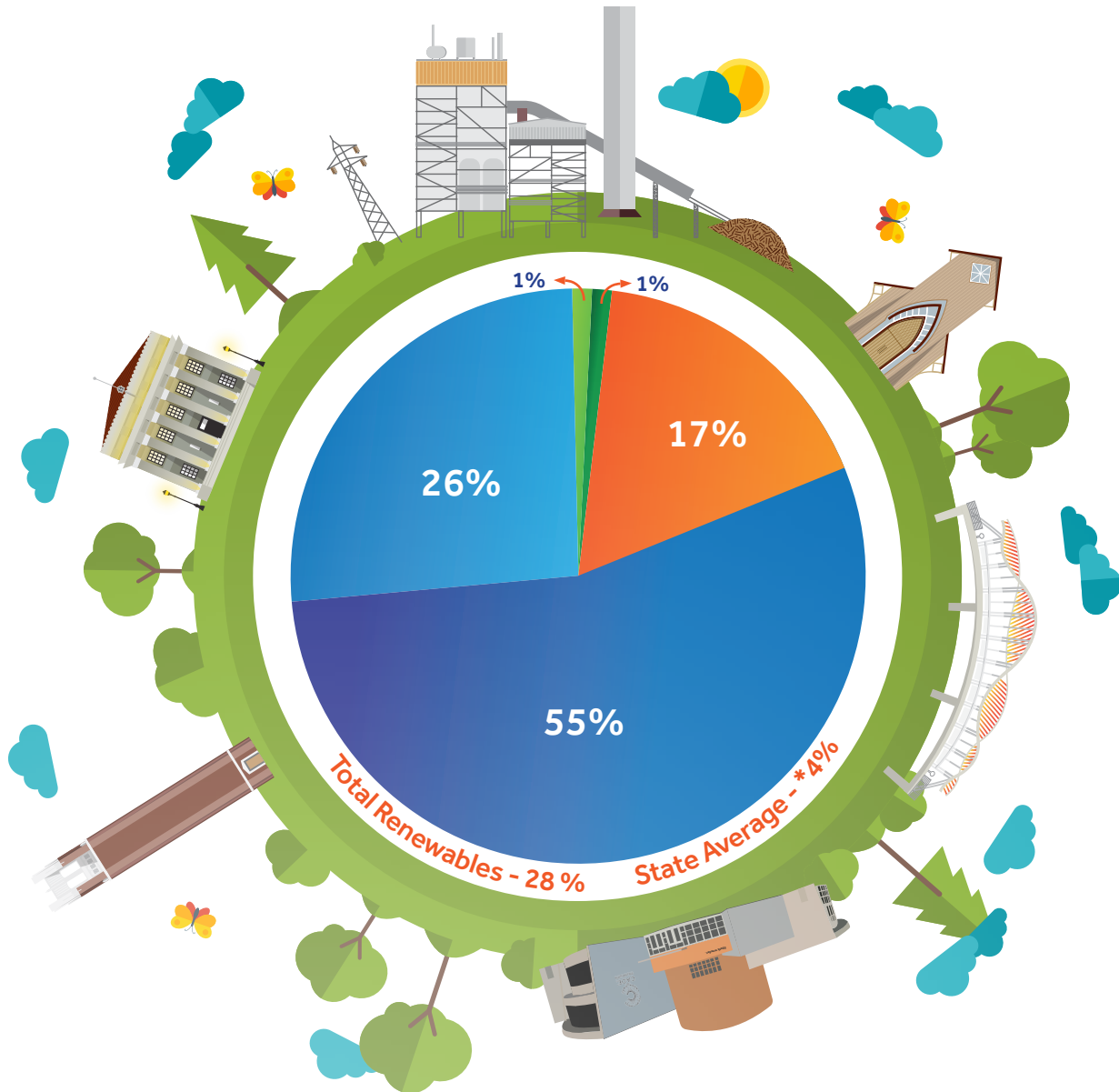


Renewable Energy Report

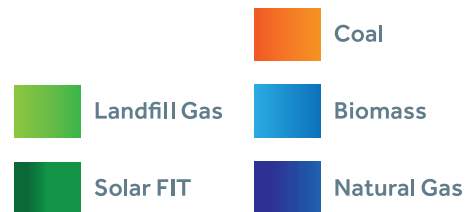
GRU is the state leader in power generation from renewable fuel sources and is committed to achieving the city's goal of net zero community-wide greenhouse gas emissions by 2045.

The graphic below shows how GRU powered your homes and businesses in fiscal year 2021.



OUR PLANTS

- Deerhaven Generating Station - coal and natural gas
- Kelly Plant - natural gas
- Deerhaven Renewable - biomass
- South Energy Center - natural gas



*Florida Reliability Coordinating Council, 2020.