

# *Gainesville, Florida At A Glance*

A Community Briefing

February, 2009

# *Gainesville Accolades*

- #1 in Frommer's *Cities Ranked & Rated*, 2007
- Top 10 "Best Places to Live & Play: Cities", *National Geographic Magazine*, 2007
- *Forbes Magazine's* "Best Places to Do Business and Have a Career", #12 in 2007 and #27 in 2008
- #2 Incubator in World – Sid Martin Biotechnology Incubator in Alachua, 2007
- #22 "The Smartest Cities in America", *Forbes.com*, 2008

# *Gainesville & Alachua County Population*

Alachua County: 247,560

Gainesville: 120,919

Region: 1,062,959

State of Florida: 18,680,367



Gainesville's favorable location within North Central Florida draws from a population base of more than a million

# *Percent Change In Population Growth Florida's 15 Most Populous Cities*

	<b>2006</b>	<b>2000</b>	<b>% Change</b>
Port St. Lucie	144,159	88,769	62.4 %
Cape Coral	154,499	102,286	51.0 %
<b>Gainesville</b>	<b>120,919</b>	<b>95,447</b>	<b>26.7 %</b>
Orlando	224,055	185,951	20.5 %
Tallahassee	176,336	150,624	17.1 %
Fort Lauderdale	175,836	152,397	15.4 %
Jacksonville	834,789	735,617	13.5 %
Pembroke Pines	151,786	137,427	10.4 %
Coral Springs	129,615	117,549	10.3 %
Tampa	330,886	303,447	9.0 %
Miami	391,355	362,470	8.0 %
Hollywood	143,287	139,368	2.8 %
St. Petersburg	254,225	248,232	2.4 %
Clearwater	110,602	108,789	1.7 %
Hialeah	228,344	226,419	0.9 %

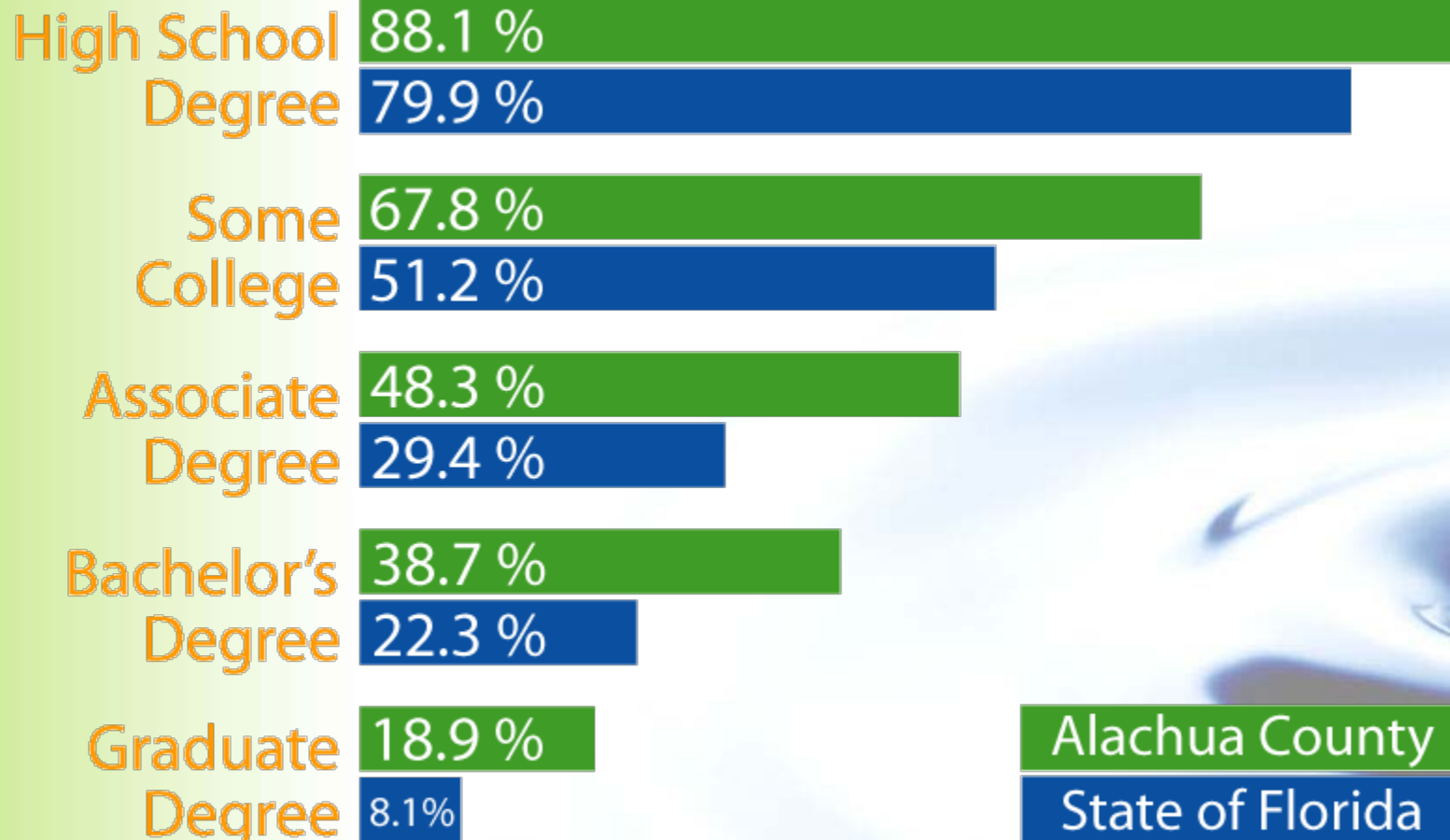
Florida Statistical Abstract 2007, Table 1.69, University of Florida,  
Bureau of Economic and Business Research

# *Strong Labor Market*

- Gainesville draws residents from 11 surrounding counties
- Alachua County has a civilian labor force of 129,580, a 2.9% increase from 2007
- Highly-skilled graduates produced from public/private schools as well as the University of Florida and Santa Fe College

# Education Level Attained

*Alachua County contains some of the most highly skilled residents in the State of Florida*



Alachua County  
State of Florida



Florida Department of Labor and Employment Security, Bureau of Labor Market Information, Florida Planning Report, 1998

# *The University of Florida*

- Ranked #5 in Biotechnology Research, Tech Transfer and Commercialization of Intellectual Property
- Recognized among the nation's leading research universities by the Carnegie Commission on Higher Education
- UF faculty attracted more than \$580 million in research and training grants in 2005-2006

# *Santa Fe College*

- Students earn associate of arts degrees from one of more than 50 technology and applied sciences programs
- SFC's associate of science program prepares students for highly-skilled professions in biotechnology and information technology
- Approximately 60% of annual grads enroll at the University of Florida
- Charter member of the League for Innovation in the Community Colleges, a group of only 20 in 15 states.

# *Transportation*

- Direct interstate access via I-75 and I-10 to locations throughout the eastern United States
- Gainesville Regional Airport offers daily flights to Atlanta and Charlotte, with both hubs offering international connections and also has a strong corporate and general aviation business.

# *Climate*

Summer Temperature Range 69-91 degrees

Winter Temperature Range 43-75 degrees

Average Annual Rainfall 51.5 inches

Snow NONE!

# *Quality Of Life*

## ARTS & CULTURE

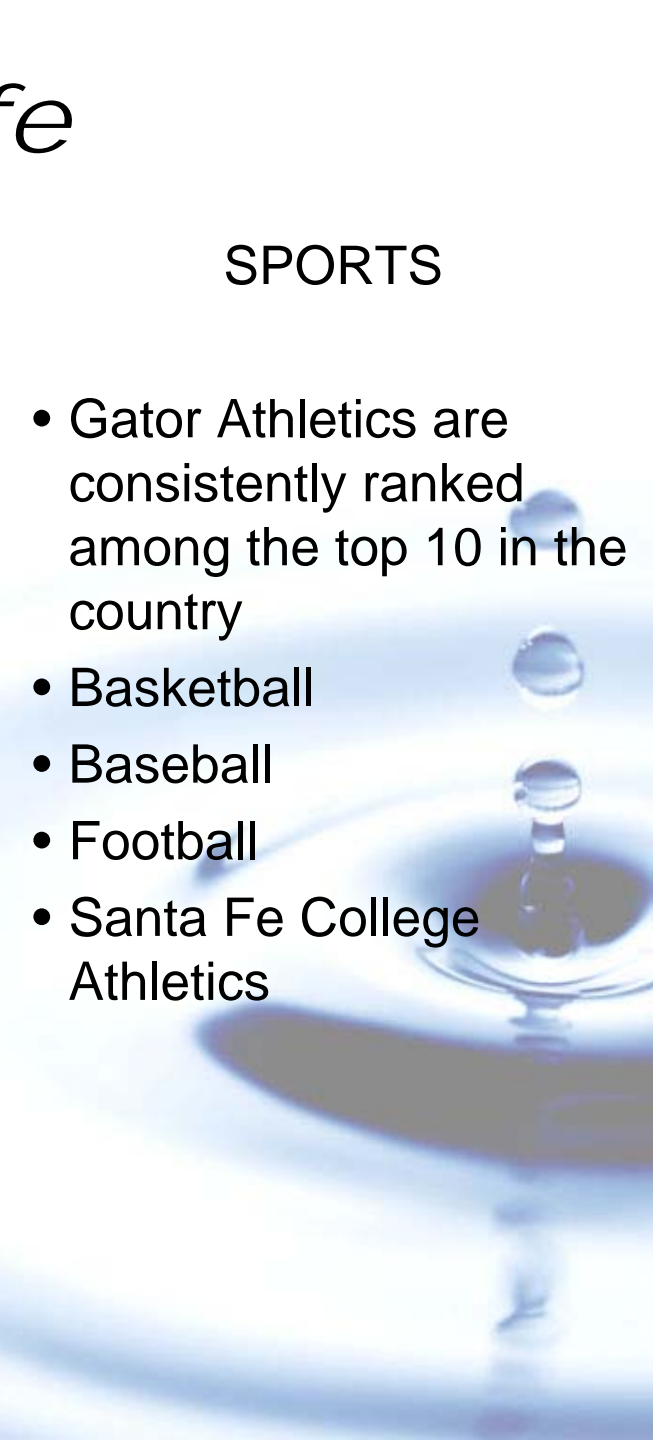
- Harn Museum of Art
- Florida Museum Of Natural History
- Hippodrome State Theatre
- University Galleries
- Santa Fe Gallery
- Danscompany of Gainesville
- Florida Players

## RECREATION

- Devil's Millhopper State Park
- Paynes Prairie State Preserve
- NHRA Gatornationals
- UF Homecoming
- 55,000 acres of lakes
- Kanapaha Botanical Gardens
- Spring Arts Festival

## SPORTS

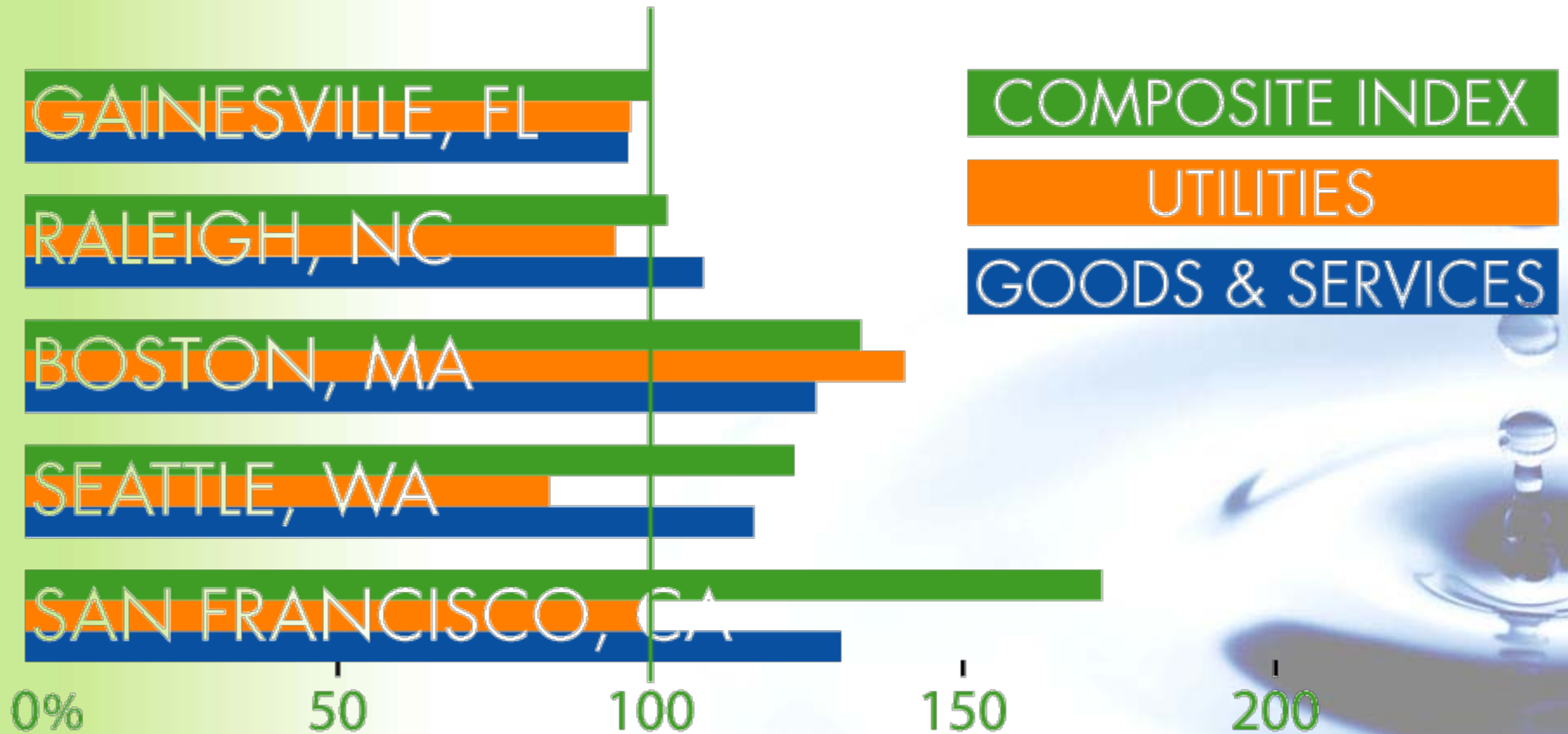
- Gator Athletics are consistently ranked among the top 10 in the country
- Basketball
- Baseball
- Football
- Santa Fe College Athletics



# *Housing*

- The average rent in 2008 for a 950 sq. ft two bedroom, unfurnished, 1 ½ bath apartment was \$830
- In December, 2008, the average cost for a single family existing home was \$160,000

# Cost of Living



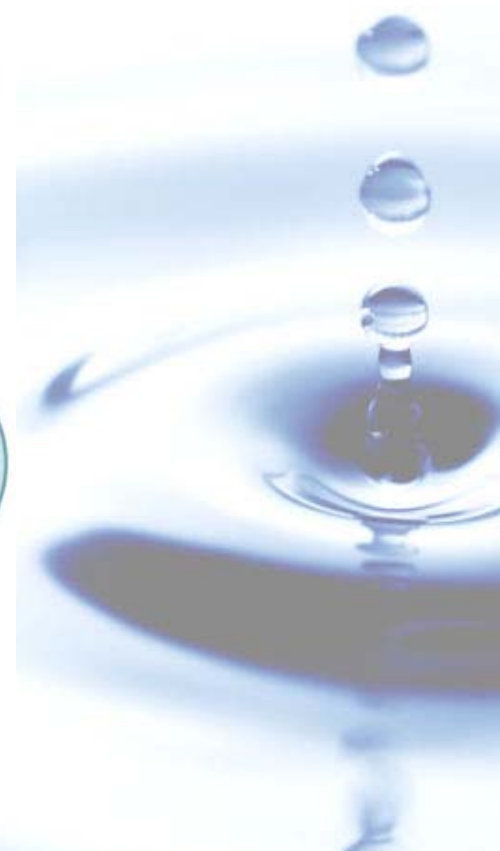
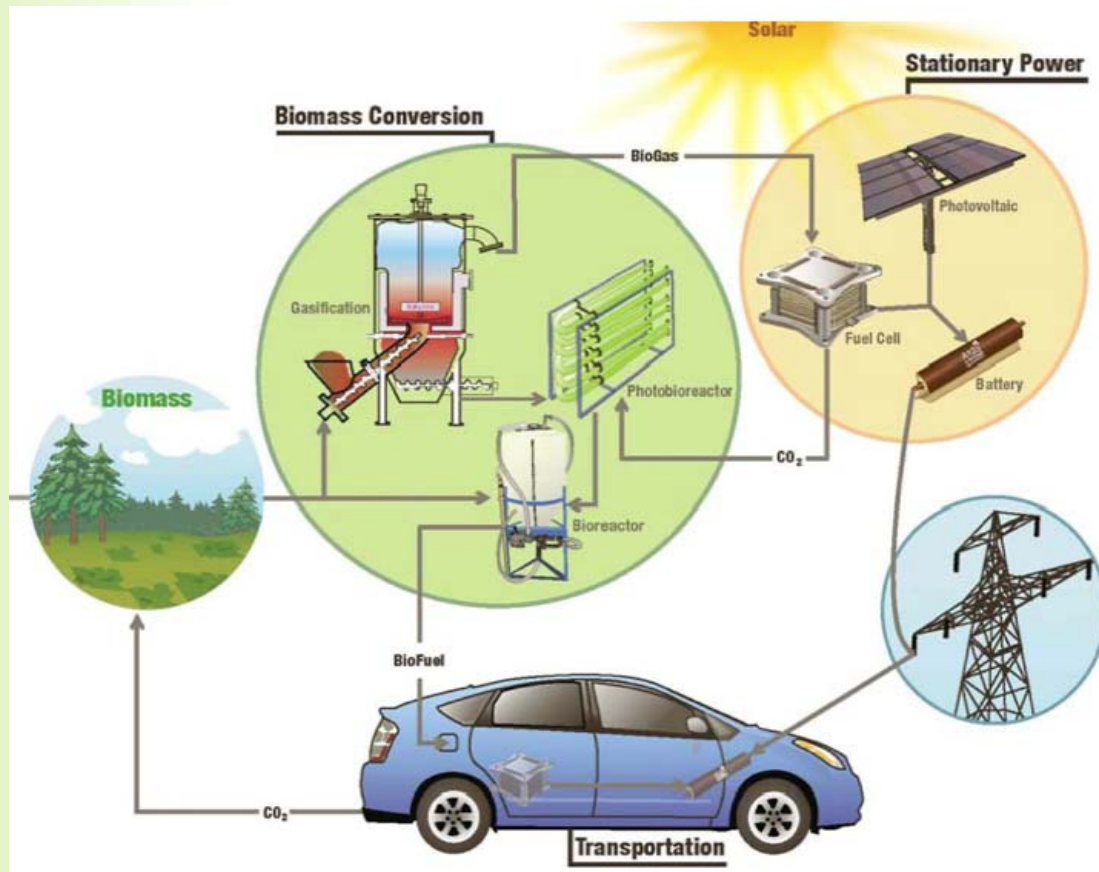
In 2008, the cost of living in Gainesville was below the national average.

*Thank You!*

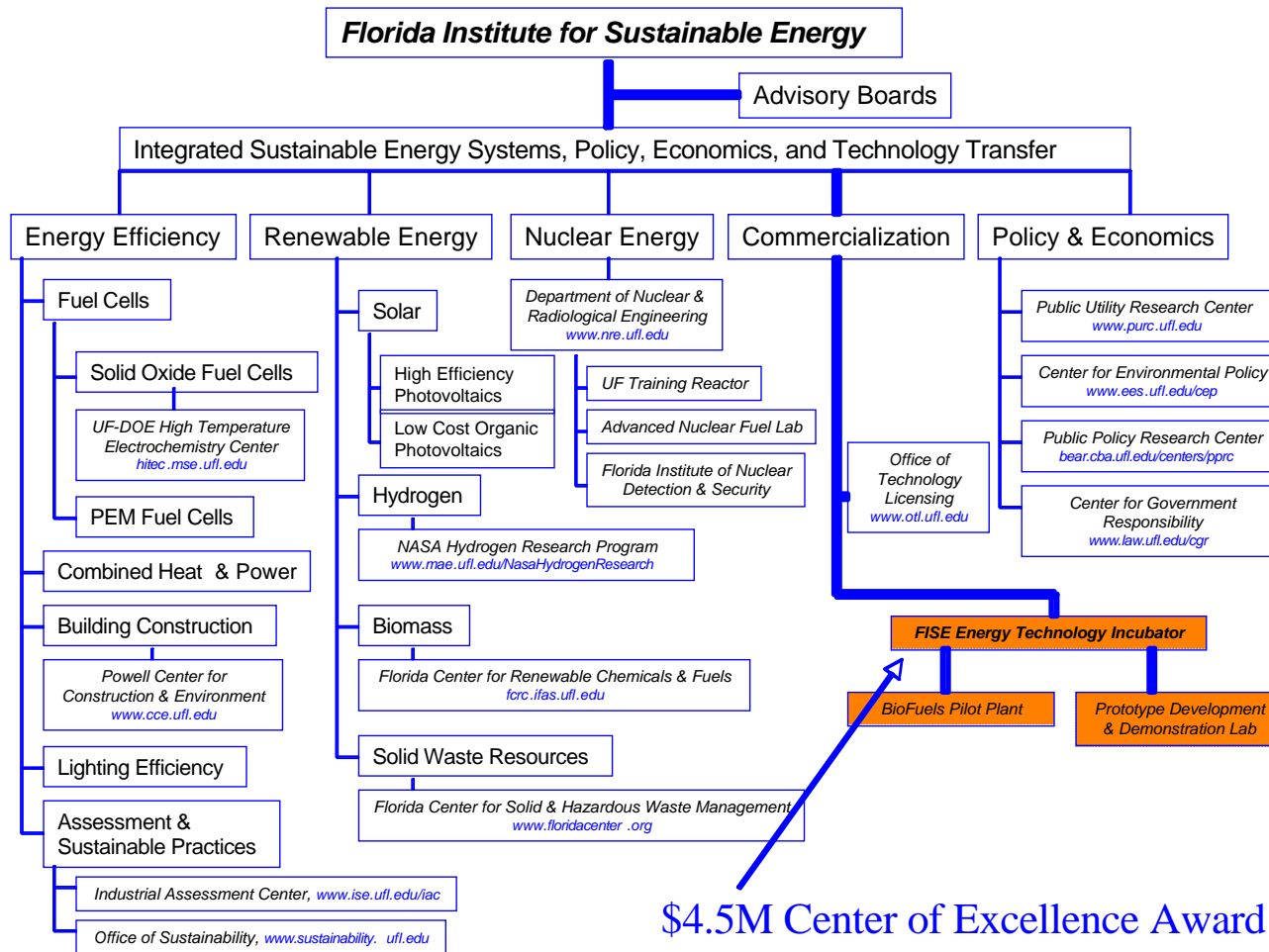
**Visit us at [www.gceo.com](http://www.gceo.com)**

# University of Florida

## Energy Research, Education and Tech Transfer



# Florida Institute for Sustainable Energy



- UF has over 150 faculty and 22 research centers devoted to energy
- From science & technology, to policy & economics, to commercialization

# Photovoltaic Research

FLORIDA INSTITUTE *for*  
SUSTAINABLE ENERGY



- includes all Florida universities
- created by statute July 2008 with ~\$40M:

- High efficiency thin film ( $\text{CuInGaSe}_2$ )
- Low cost organic based PV
- Energy storage (batteries)
- Power electronics, etc...



FLORIDA INSTITUTE *for*  
SUSTAINABLE ENERGY

# *Photovoltaic Research*

- CdTe thin film: USF
  - Held record cell efficiency for 10 yrs
- CIGS thin film: UCF (FSEC), UF, USF
  - Pilot module fabrication and testing facility
- Organic PV: UF, UCF
  - Integrated PV/Storage/Lighting Systems
- Next generation PV: UCF (FSEC), UF, USF
  - Hybrid organic, multi-junction, multiple excitation
- Integration of Balance of Systems (UCF, UF)
  - Panel-mounted micro-inverter



# UF Energy R&D Infrastructure

---

## FISE Energy Technology Incubator

- \$4.5M Florida Center of Excellence
- User facility for fabrication and testing of energy technologies

## Major Analytical Instrumentation Center (MAIC)

- User facility for materials characterization
- SEM, TEM, AFM, XRD, XPS, etc...

## Nanoscale Research Facility (NRF)

- User facility for nano-scale fabrication

## Particle Engineering Research Center (PERC)

- User facility for particle synthesis and characterization

# Florida Energy Workforce Development

The mandate of FESC workforce development program is to develop energy related programming to prepare the next generation energy workforce on 4 levels:

Statewide Diverse Pool of Students


1. Community colleges degrees and certificate programs,
2. Nuclear engineering training,
3. Masters level programming,
4. Commercial sectors training

- 28 Community Colleges
  - 800,000 Students
- 12 Public Colleges and Universities
  - 2400,00 undergrads
  - 55,000 graduate students
- Program for Resource Efficient Communities
  - has already helped several thousand licensed building professionals across Florida achieve their required continuing education units

# For more information:

Florida Institute for Sustainable Energy University of Florida

>> Harnessing carbon-free energy resources



Sustainable Energy is...  
<< PHOTOVOLTAIC PANELS

---

HOME

ABOUT US

ENERGY EFFICIENCY

RENEWABLE ENERGY

NUCLEAR ENERGY

ENERGY TECHNOLOGY INCUBATOR

POLICY AND ECONOMICS

CONTINUING EDUCATION

EDUCATION, OUTREACH AND EXTENSION

LINKS

April 21, 2008

**The Need**  
Our quality of life, standard of living and national security depend on energy. A strong, balanced energy research program, based on the most efficient use of our natural resources while minimizing our dependence on imported energy, is critical to Florida and the U.S.

**Addressing the Need**  
The Florida Institute for Sustainable Energy brings together research capabilities necessary to create a sustainable energy future. FISE encompasses more than 150 faculty members and 22 energy research centers at the University of Florida. In the last few years alone, UF's Federal and State funded energy research exceeded \$70 million.


**FISE Energy Technology Incubator**  
The FISE Energy Technology Incubator was created through a \$4.5 million Florida Center of Excellence award by the Board of Governors. The Incubator includes a Prototype Development & Demonstration Laboratory and a Biofuel Pilot Plant to accelerate commercialization of energy technologies and processes. Thus helping Florida's economy by simultaneously creating new high-tech industries and addressing the state's growing energy needs.

**>> NEWS & EVENTS**


**The University of Florida Receives \$600K US DOE Funding**  
The University of Florida was awarded \$600,000 US DOE funding for "Rapid Synthesis of CIGS Absorbers".  
[Read More >>](#)

**Florida Crossroads - Farm to Fuel: A Florida Initiative, Part 1**  
Sugar cane, citrus peel and wood waste could become the key ingredients used to make a new kind of biofuel called cellulosic ethanol. Florida Crossroads travels from Florida's farmland to the local gas pump to show how cellulosic ethanol is made.  
[Read More >>](#)

**Presidential Candidates Urged to Discuss Questions Key to U.S. Energy Security and Competitiveness**  
The Council on Competitiveness issued an open letter to urge the presidential candidates to give more focused attention to the critical importance of energy security and sustainability.  
[Read More >>](#)



Biofuels such as ethanol derived from low-cost, abundant biomass lessen our dependence on foreign fuel sources.



[www.energy.ufl.edu](http://www.energy.ufl.edu)